

## PROJECT GUIDE

# C-43 WEST BASIN RESERVOIR

A critical project to store and manage basin runoff and maintain healthy flows to the Caloosahatchee Estuary during dry season.

### CERP

Construction of the C-43 reservoir is part of CERP, or the Comprehensive Everglades Restoration Plan. CERP is facilitated through a federal-state partnership and aims to restore, protect, and preserve the region's water resources.

### SFWMD

The C-43 West Basin Reservoir is being constructed by the South Florida Water Management District, one of the largest regional management districts in the world.

### 55 Billion

The completed C-43 Reservoir will hold 55 billion gallons of water (170,000 acre-feet) with a maximum structure depth of 25 feet.

### 18 mi<sup>2</sup>

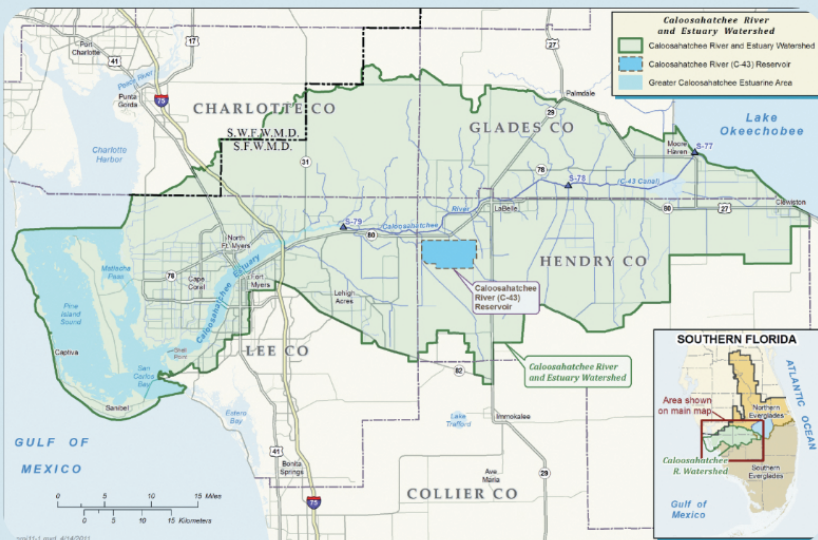
Size of completed reservoir, almost half the size of Disney World and larger than Sanibel Island.

### 2025

Target date of completion for entire reservoir, with most recent milestone being pump station construction in Dec 2023.

### C-43

Technical name for the Caloosahatchee River, translating to Canal-43 due to the river's artificial modifications for that use.



Location of C-43 West Basin Reservoir in relation to Sanibel & Captiva Islands and Southwest Florida.

Source: South Florida Water Management District, ([sfwmd.gov](http://sfwmd.gov))

## KEY BENEFITS

The completed C-43 West Basin Reservoir will help balance the Caloosahatchee water budget by capturing lake releases and basin runoff during the wet season and providing the estuary necessary minimum flows during the dry season. This project will provide water managers greater control over the quality, quantity, timing and distribution (QQTd) of water moving into the Caloosahatchee Estuary.

[Learn more about Everglades Restoration](#) and other key projects that benefit and safeguard Florida's natural ecosystems.