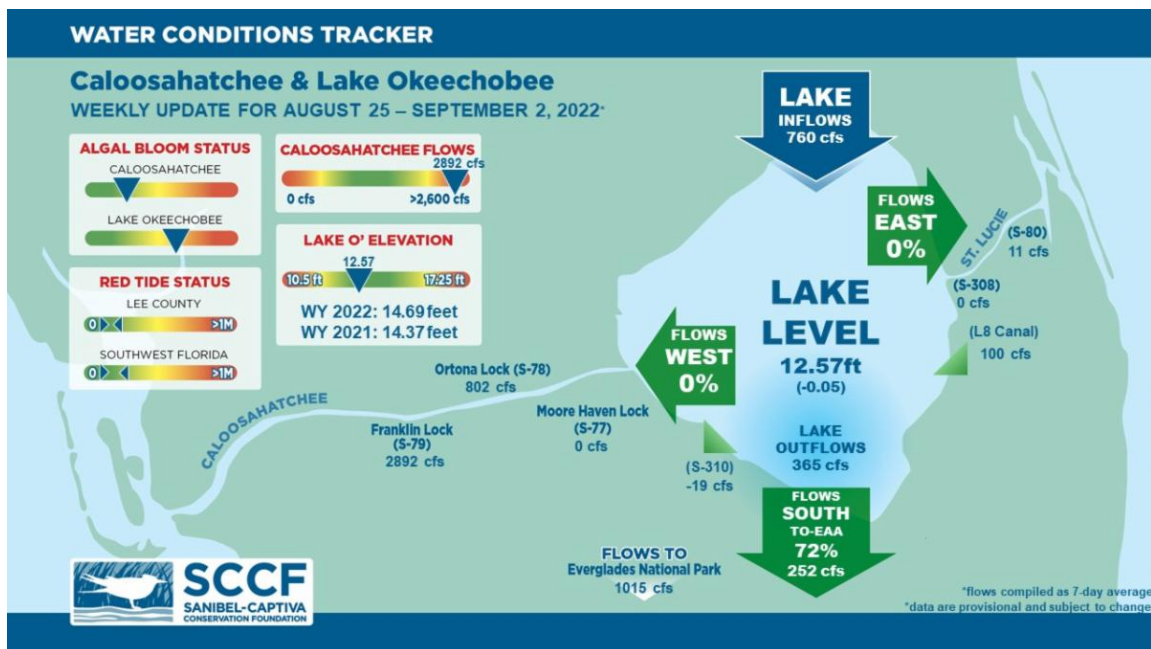




This Week's Water Conditions Update

September 2, 2022

Water Conditions Tracker



Lake Okeechobee Levels & Caloosahatchee Flow Impacts

On 9/2/22 Lake Okeechobee was at 12.57 feet, decreasing by 0.05 feet in the past week. The weekly average flow at S-79 was 2,892 cfs (cubic feet per second) and flow from the Lake at S-77 was an average of 0 cfs. The 14-day average flow was **1,761 cfs** and has been in the optimal flow envelope (750 - 2100 cfs) for 18 days.

For more information on Lake Okeechobee and estuary conditions go to the latest [Caloosahatchee Conditions Report](#)



Sanibel Captiva Conservation Foundation

8/29/22

Virtual Water Quality Tour from Lighthouse Beach

[Click here](#) or on the image above to take a virtual tour from above Lighthouse Beach Park to see how the water looked this week.

Photo was taken on 8/29/22 at 12:27 PM on a rising tide (High tide @ 2:06 PM (3.04ft)).

Red Tide

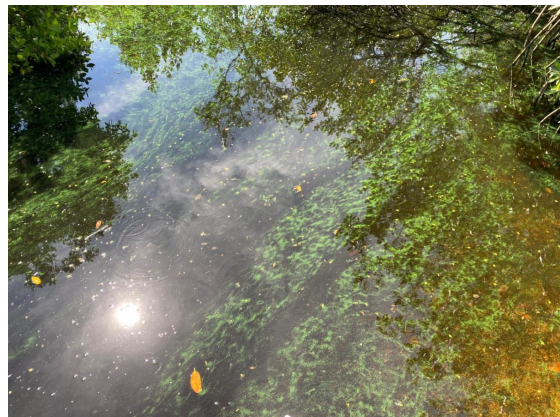
[Satellite imagery](#) over the past week has not detected any blooms off the coast of Southwest Florida.

On 8/26/22, the FWC reported that the red tide organism, *Karenia brevis* was not observed in samples collected statewide.

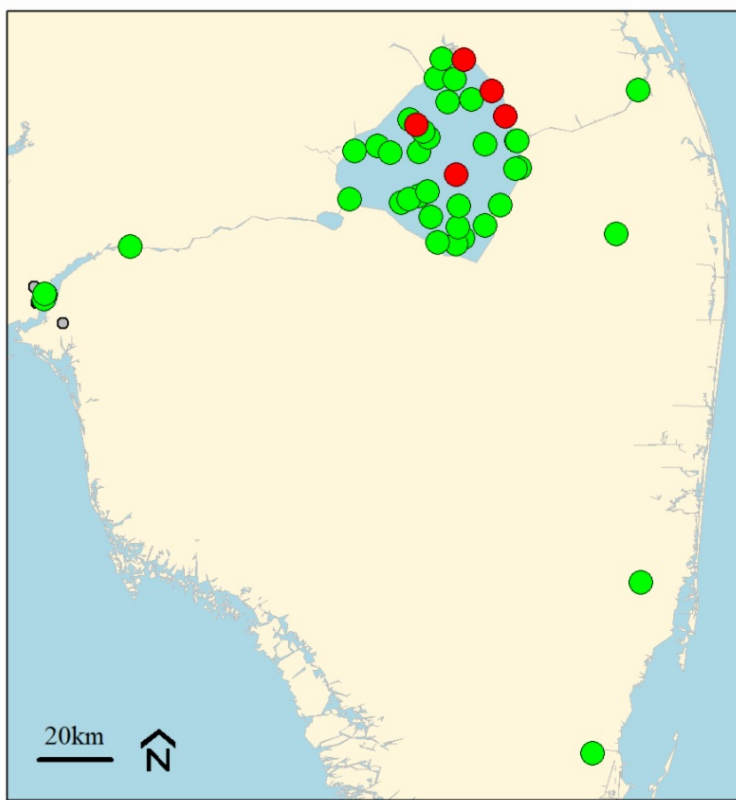
The Clinic for the Rehabilitation of Wildlife (CROW) on Sanibel received 5 birds with toxicosis symptoms (from red tide or blue-green algae) from 8/22/22 - 8/28/22.

Blue-Green Algae

On 8/29/22 sampling for cyanobacteria by the Lee County Environmental Lab reported the **presence** of *Microcystis* upstream of the **Franklin Locks** with slight scum along the lock. *Microcystis* and *Dolichospermum* were **moderately abundant** at the **Davis Boat Ramp** with visible specks and some small streaks



Cyanobacteria (*Dolichospermum helicoideum*) at the Four Mile ECO preserve kayak launch on 08/29/22. City of Cape Coral.



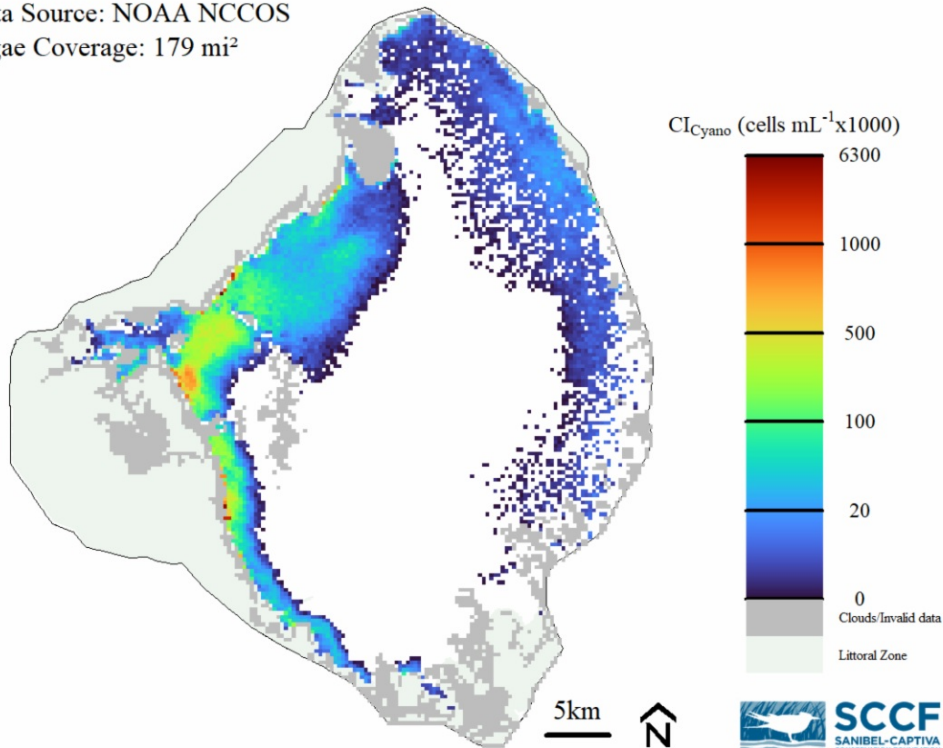
Blue-green Algae Toxin status
Aug 03,2022 to Aug 29,2022
(Presence/Absence)

- Toxin Present
- Toxin Not Present
- No Data

Data from the [FDEP blue-green algae dashboard](#) reported 68 samples collected over the past 30 days for the 10 county area. 5 sample had toxins present with 0.45 μg per L which is **below** the EPA recommended standard for recreational waters (8 μg per L).

On 9/1/22, [satellite imagery](#) from Lake Okeechobee showed medium bloom potential on the northern and northwestern nearshore area of the lake. There was high bloom potential the western edge of the lake. Overall, algal blooms covered about 179 square miles (26%) of the Lake.

Date: 09-01-2022
Data Source: NOAA NCCOS
Algae Coverage: 179 mi²



Become a Citizen Scientist and Get the Algae Reporting App Today!

SCCF wants to know when and where all types of algae sightings occur to monitor conditions around the islands and to investigate algae bloom occurrence with patterns in seasonal weather changes and Lake Okeechobee water management practices.



Download the algae reporting app on your phone by [clicking here](#) or by searching for the ArcGIS Survey123 app in the app store. Once installed, give the app permission to access your phone's location to receive GPS coordinates of your sighting and camera/media to capture and attach pictures. When you open the app, click "Continue Without Signing In."

Next, download the algae reporting survey by scanning the QR code above or [clicking here](#) on your phone. Once the survey is downloaded, fill out the required fields and click the check mark in the lower right corner to submit your sighting. Note: If you do not have cellular coverage, you can still fill out the survey and save it in the outbox to be sent later. [Click here](#) to download instructions.

Resources To Follow:

To learn more about our current water conditions, click on the following links:

[Caloosahatchee Conditions Report](#)

A collaborative, weekly analysis, including recommendations for water managers regarding Lake Okeechobee flows.

[RECON](#)

SCCF's River, Estuary, and Coastal Observing Network is a network of eight optical water quality sensors deployed throughout the Caloosahatchee and the Pine Island Sound estuary to provide real-time water quality data.

[Caloosahatchee River Virtual Tour](#)

[Red Tide Resources](#)

[NOAA HAB Monitoring System - Lake Okeechobee](#)

[Algae Reporting App.](#)

[Click here](#) to subscribe to *Connecting You to SCCF* and other SCCF mailing lists.

DONATE TO SCCF

Stay Connected!



[Update Profile](#) | [Constant Contact Data Notice](#)

Sent by bysccf@sccf.org powered by



Try email marketing for free today!