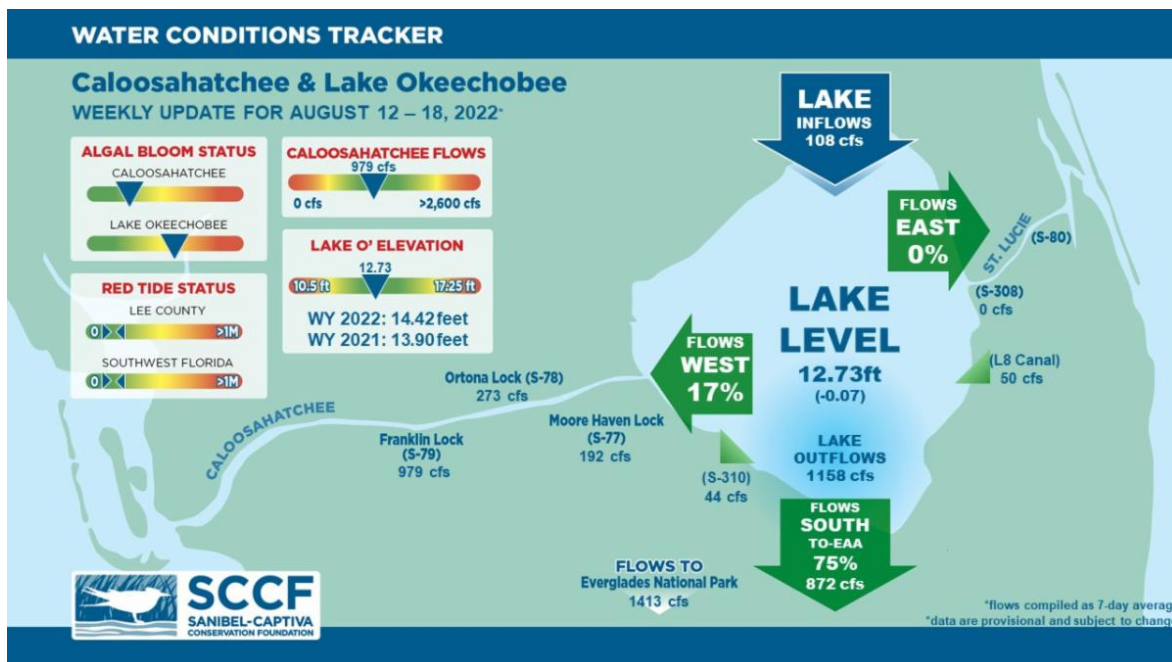




This Week's Water Conditions Update

August 19, 2022

Water Conditions Tracker



Lake Okeechobee Levels & Caloosahatchee Flow Impacts

On 8/18/22 Lake Okeechobee was at 12.73 feet, decreasing by 0.07 feet in the past week. The weekly average flow at S-79 was 979 cfs (cubic feet per second) and flow from the Lake at S-77 was an average of 192 cfs. The 14-day average flow was **839 cfs** and has been in the optimal flow envelope (750 - 2100 cfs) for 4 days.

For more information on Lake Okeechobee and estuary conditions go to the latest [Caloosahatchee Conditions Report](#)

US Army Corps Reduces Flow

On 8/13/22 the USACE reduced target flows at the W.P. Franklin Lock and Dam (S-79) to a 7-day average pulse release of 457 cfs from the previous target of 650 cfs. Local basin runoff has been exceeding the targets set for the past several months, so little water has left the lake from the Julian Keen Jr. Lock and Dam (S-77).

457 cfs is below the optimum flow envelope (750 - 2100 cfs) for the Caloosahatchee estuary, but local basin runoff combined with Lake Okeechobee releases have resulted in 14-day average flows in the optimum flow envelope for 4 days after being in the low flow (stress) envelope (<750 cfs) for 10 days.



Virtual Water Quality Tour from Lighthouse Beach

[Click here](#) or on the image above to take a virtual tour from above Lighthouse Beach Park to see how the water looked this week.

Photo was taken on 8/15/22 at 1:28 PM on a rising tide (High tide @ 3:31 PM (2.85ft)).

Red Tide

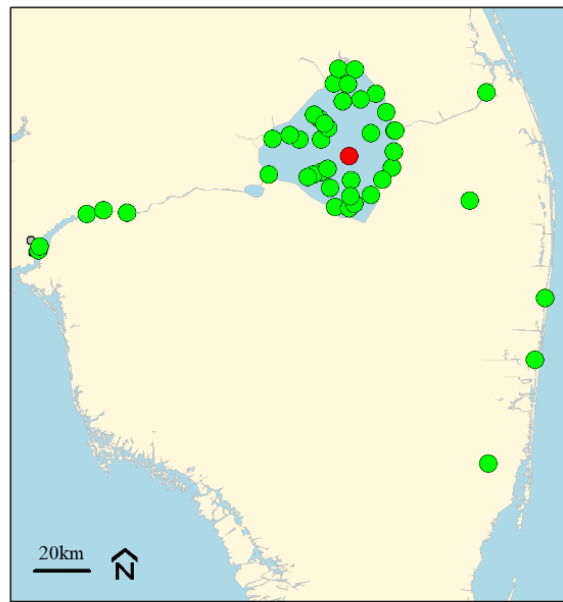
[Satellite imagery](#) over the past week has not detected any blooms off the coast of Southwest Florida.

On 8/12/22, the FWC reported that the red tide organism, *Karenia brevis* was not observed in samples collected statewide.

The Clinic for the Rehabilitation of Wildlife (CROW) on Sanibel received 3 birds with toxicosis symptoms (from red tide or blue-green algae) from 8/8/22 - 8/14/22.

Blue-Green Algae

On 8/15/22 sampling for cyanobacteria by the Lee County Environmental Lab reported the presence of *Microcystis* at the **Alva Boat Ramp** and **upstream of the Franklin Locks** as sparse visible specks. *Microcystis* and *Dolichospermum* were present at the **Davis Boat Ramp** as sparse visible specks.



Blue-green Algae Toxin status
 Jul 20, 2022 to Aug 17, 2022
 (Presence/Absence)

- Toxin Present
- Toxin Not Present
- No Data

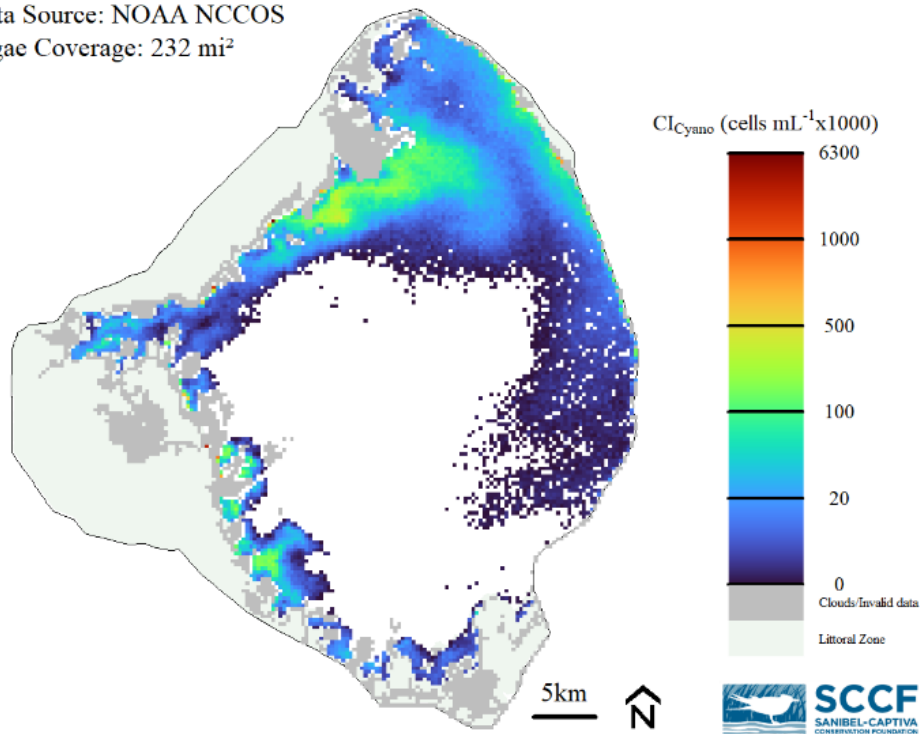
Blue-green Algae sampling results for the last 30-days for the 10 county area (Lee, Collier, Hendry, Glades, Okeechobee, Martin, Palm Beach, Broward, Miami-Dade and Monroe). Data from FDEP Blue-green algae dashboard

Data are provisional and subject to change.

Data from the [FDEP blue-green algae dashboard](#) reported 96 samples collected over the past 30 days for the 10 county area. 1 sample had toxins present ranging with 4.5 µg per L which is **below** the EPA recommended standard for recreational waters (8 µg per L).

On 8/18/22, [satellite imagery](#) from Lake Okeechobee showed medium bloom potential on the northern nearshore area of the lake. Overall, algal blooms covered about 232 square miles (33%) of the Lake.

Date: 08-18-2022
 Data Source: NOAA NCCOS
 Algae Coverage: 232 mi²



Cyanobacteria Algal Index across Lake Okeechobee. Data from NOAA NCCOS HAB data explorer.

Data are provisional and subject to change.

Become a Citizen Scientist and Get the Algae Reporting App Today!

SCCF wants to know when and where all types of algae sightings occur to monitor conditions around the islands and to investigate algae bloom occurrence with patterns in seasonal weather changes and Lake Okeechobee water management practices.



Download the algae reporting app on your phone by [clicking here](#) or by searching for the ArcGIS Survey123 app in the app store. Once installed, give the app permission to access your phone's location to receive GPS coordinates of your sighting and camera/media to capture and attach pictures. When you open the app, click "Continue Without Signing In."

Next, download the algae reporting survey by scanning the QR code above or [clicking here](#) on your phone. Once the survey is downloaded, fill out the required fields and click the check mark in the lower right corner to submit your sighting. Note: If you do not have cellular coverage, you can still fill out the survey and save it in the outbox to be sent later. [Click here](#) to download instructions.

Resources To Follow:

To learn more about our current water conditions, click on the following links:

[Caloosahatchee Conditions Report](#)

A collaborative, weekly analysis, including recommendations for water managers regarding Lake Okeechobee flows.

[RECON](#)

SCCF's River, Estuary, and Coastal Observing Network is a network of eight optical water quality sensors deployed throughout the Caloosahatchee and the Pine Island Sound estuary to provide real-time water quality data.

[Caloosahatchee River Virtual Tour](#)

[Red Tide Resources](#)

[NOAA HAB Monitoring System - Lake Okeechobee](#)

[Algae Reporting App.](#)

[Click here](#) to subscribe to *Connecting You to SCCF* and other SCCF mailing lists.

[DONATE TO SCCF](#)

Stay Connected!

