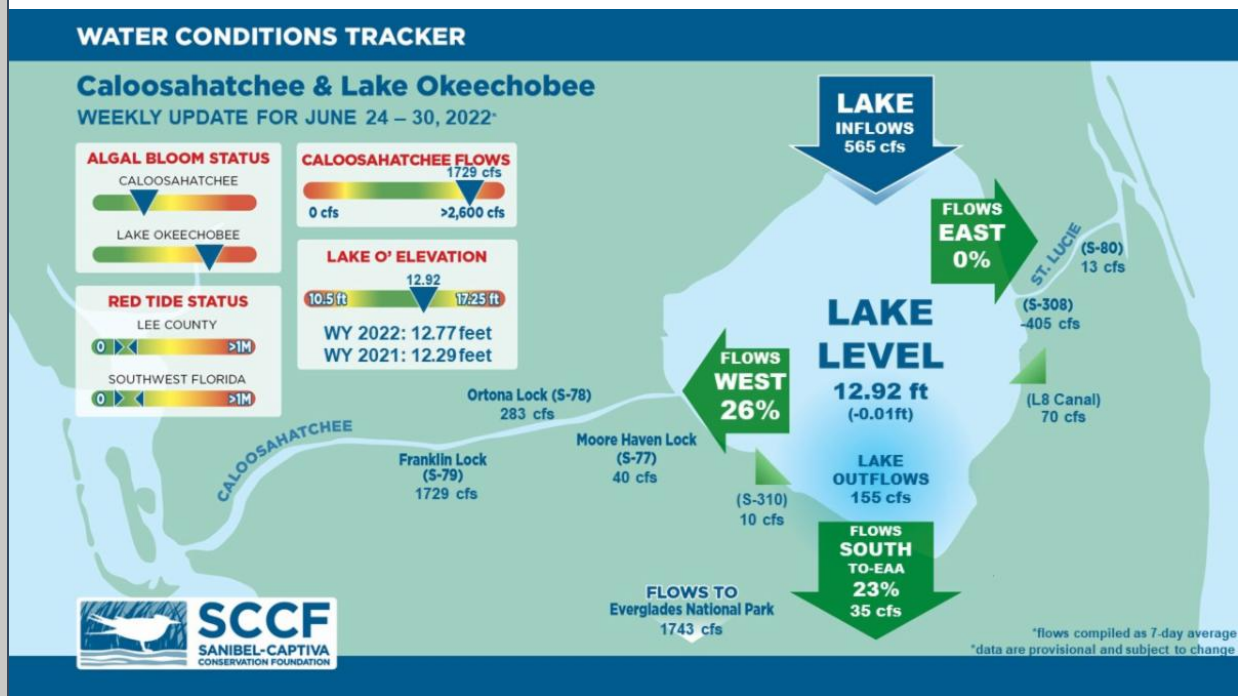




This Week's Water Conditions Update

July 1, 2022

Water Conditions Tracker



Lake Okeechobee Levels & Caloosahatchee Flow Impacts

On 6/30/22 Lake Okeechobee was at 12.92 feet, decreasing by 0.01 feet in the past week. The weekly average flow at S-79 was 1,729 cfs (cubic feet per second) and flow from the Lake at S-77 was an average of 40 cfs. The 14-day average flow on 6/23/22 was **1,734 cfs** and has been in the optimal (750 - 2100 cfs) flow envelope for 5 days.

For more information on Lake Okeechobee and estuary conditions go to the latest [Caloosahatchee Conditions Report](#)



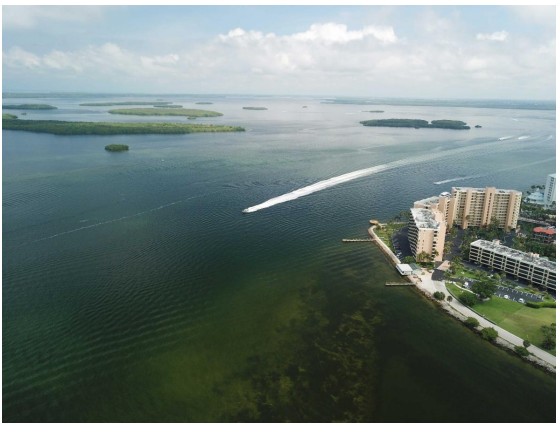
Sanibel Captiva Conservation Foundation

6/27/2022

Virtual Water Quality Tour from Lighthouse Beach

[Click here](#) or on the image above to take a virtual tour from above Lighthouse Beach Park to see how the water looked this week.

Photo was taken on 6/20/22 at 1:38 PM on a rising tide (Low tide @ 12:38 PM (1.56ft)).



Water clarity near the Punta Rassa, looking north towards the mouth of the Caloosahatchee on 6/25/22. SCCF.



Matlacha Pass south of the bridge on Friday afternoon, 6/24/22. Water turbidity still discolored but not hypoxic (80% saturation in whitest area of the photo). SCCF.

Red Tide

[Satellite imagery](#) over the past week has not detected any blooms off the coast of Southwest Florida.

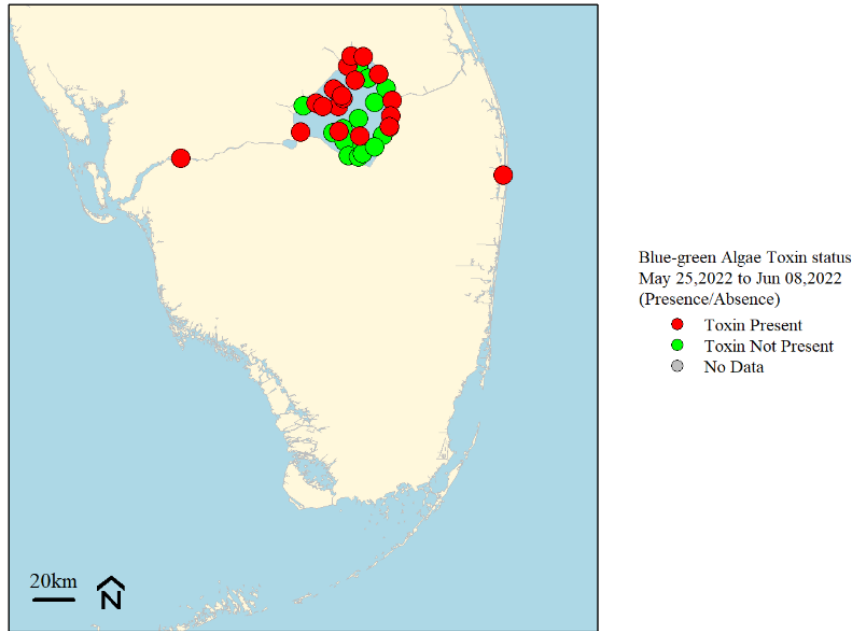
On 6/24/22, the FWC reported that the red tide organism, *Karenia brevis* was observed at background concentrations in and offshore of Lee County and offshore of Collier County.

In the past week (6/21 – 6/27), the CROW wildlife hospital on Sanibel received 1 toxicosis patient: 1 anhinga (died).

Blue-Green Algae

On 6/27/22 sampling for cyanobacteria by the Lee County Environmental Lab reported the **presence** of *Dolichospermum* at the Davis Boat Ramp with some visible streaks.

Data from the [FDEP blue-green algae dashboard](#) reported 43 samples collected over the past 30 days for the 10 county area 23 samples had toxins present ranging from 0.25 to 1.2 μg per L which is below the EPA recommended standard for recreational waters (8 μg per L).



Blue-green Algae sampling results for the last 30-days for the 10 county area (Lee, Collier, Hendry, Glades, Okeechobee, Martin, Palm Beach, Broward, Miami-Dade and Monroe). Data from FDEP Blue-green algae dashboard

Data are provisional and subject to change.

Of the 43 samples collected, cyanobacteria was dominate in 17 samples, 23 samples had toxins present ranging from 0.25 to 1.2 μg L⁻¹ (does not include non-detects).

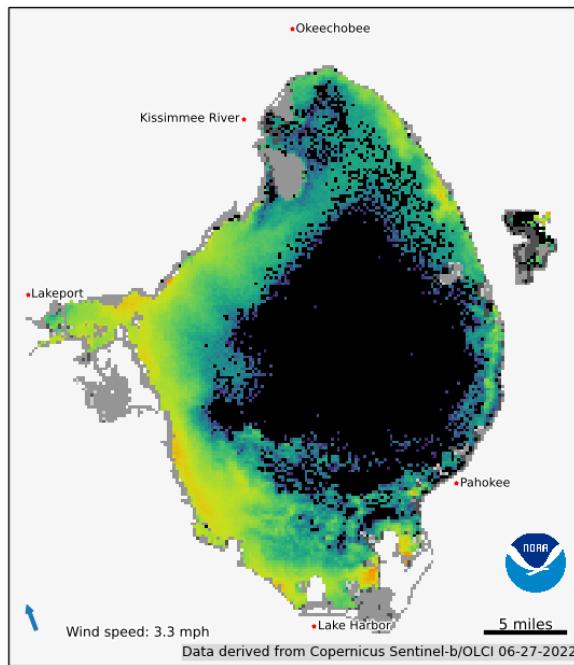


Cyanobacteria bloom on the west side of Lake Okeechobee on 6/24/22. *Ralph Arwood & Calusa Waterkeeper.*

On 6/27/22, [satellite imagery](#) from Lake Okeechobee showed that algal blooms covered about 284 square miles (~41%) of the Lake along the north, west, and southern shores, an increase since 6/20/22.



Lake Okeechobee true color image derived from the OLCI sensor on Copernicus Sentinel-b obtained from EUMETSAT.



Cyanobacteria Index (Cicyano) for Lake Okeechobee. Algal bloom covers about 280 square miles, which is an increase in area since Jun 25. Clouds may obscure the bloom, leading to an underestimate of the area. Moderate and low concentrations may not be obvious to the eye. Average wind for preceding 3 hours of satellite observation from South Florida Water Management District station LZ40.

Resources To Follow:

To learn more about our current water conditions, click on the following links:

[Caloosahatchee Conditions Report](#)

A collaborative, weekly analysis, including recommendations for water managers regarding Lake Okeechobee flows.

[RECON](#)

SCCF's River, Estuary, and Coastal Observing Network is a network of eight optical water quality sensors deployed throughout the Caloosahatchee and the Pine Island Sound estuary to provide real-time water quality data.

[Red Tide Resources](#)

[NOAA HAB Monitoring System - Lake Okeechobee](#)

[Algae Reporting App.](#)

[Click here](#) to subscribe to *Connecting You to SCCF* and other SCCF mailing lists.

[DONATE TO SCCF](#)

Stay Connected!

