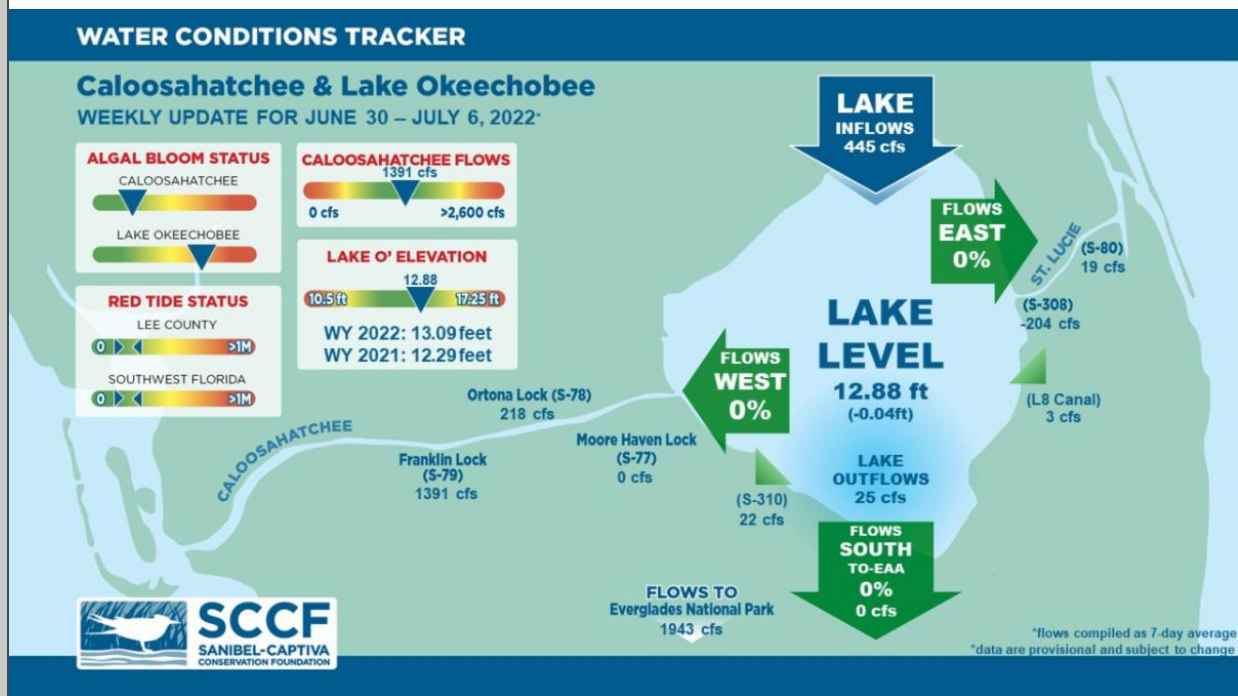




This Week's Water Conditions Update

July 8, 2022

Water Conditions Tracker



Lake Okeechobee Levels & Caloosahatchee Flow Impacts

On 7/6/22 Lake Okeechobee was at 12.88 feet, decreasing by 0.04 feet in the past week. The weekly average flow at S-79 was 1,391 cfs (cubic feet per second) and flow from the Lake at S-77 was an average of 0 cfs. The 14-day average flow on 7/6/22 was **1,513 cfs** and has been in the optimal flow envelope (750 - 2100 cfs) for 11 days.

For more information on Lake Okeechobee and estuary conditions go to the latest [Caloosahatchee Conditions Report](#)



Virtual Water Quality Tour from Lighthouse Beach

[Click here](#) or on the image above to take a virtual tour from above Lighthouse Beach Park to see how the water looked this week.

Photo was taken on 7/5/22 at 2:06 PM on a rising tide (Low tide @ 11:40 AM (1.41ft)).

Red Tide

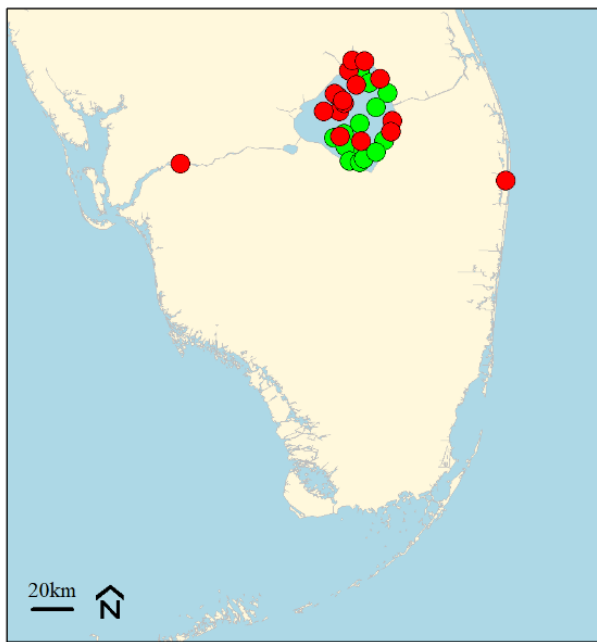
[Satellite imagery](#) over the past week has not detected any blooms off the coast of Southwest Florida.

On 7/1/22, the FWC reported that the red tide organism, *Karenia brevis* was observed at background concentrations offshore of Hillsborough County.

In the past week (6/27 – 6/4), the CROW wildlife hospital on Sanibel received 1 toxicosis patient: 1 green sea turtle (died).

Blue-Green Algae

On 7/5/22 sampling for cyanobacteria by the Lee County Environmental Lab reported **moderately abundant** *Dolichospermum*, *Microcystis* and cyanobacterial filaments at the **Davis Boat Ramp** with visible streaks and some accumulation along the seawall. No cyanobacteria were present upstream of the Franklin Locks. However, the area has been experiencing a dinoflagellate bloom for the past few weeks.



Blue-green Algae Toxin status
Jun 07,2022 to Jun 08,2022
(Presence/Absence)

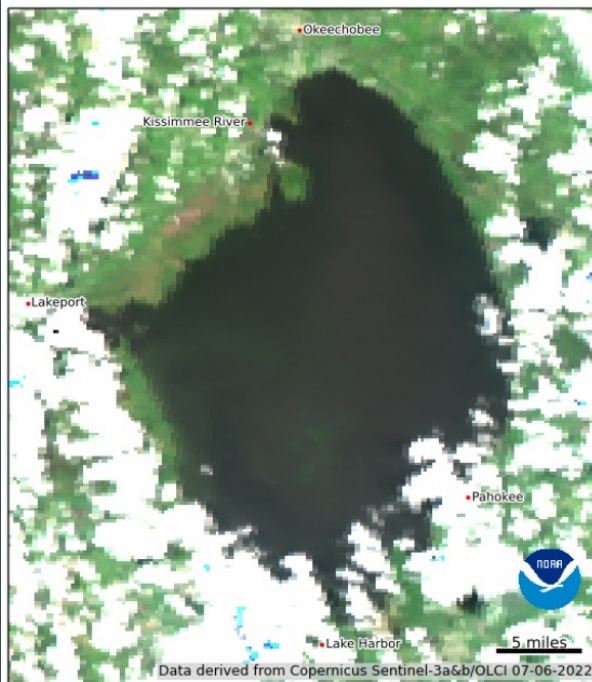
- Toxin Present
- Toxin Not Present
- No Data

Blue-green Algae sampling results for the last 30-days for the 10 county area (Lee, Collier, Hendry, Glades, Okeechobee, Martin, Palm Beach, Broward, Miami-Dade and Monroe). Data from FDEP Blue-green algae dashboard

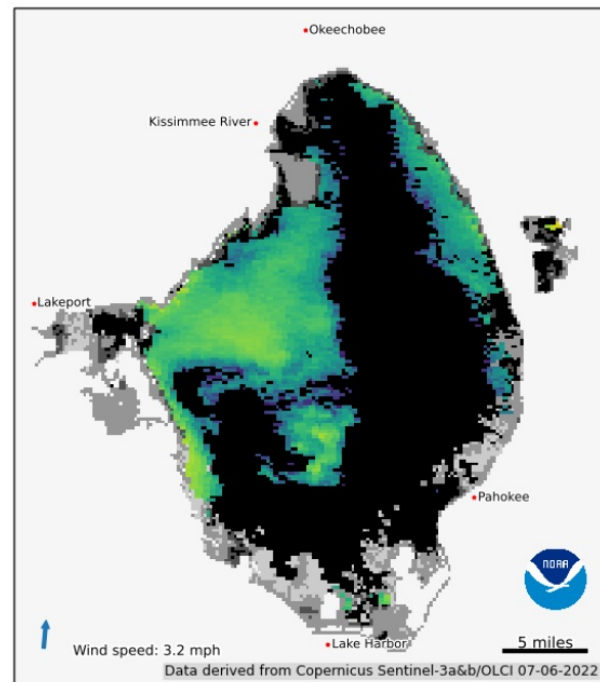
Data are provisional and subject to change.

Data from the [FDEP blue-green algae dashboard](#) reported 33 samples collected over the past 30 days for the 10 county area. 17 samples had toxins present ranging from 0.25 to 1.2 µg per L which is below the EPA recommended standard for recreational waters (8 µg per L).

On 6/27/22, [satellite imagery](#) from Lake Okeechobee showed that algal blooms covered about 284 square miles (~23%) of the Lake, a decrease since 7/1/22.

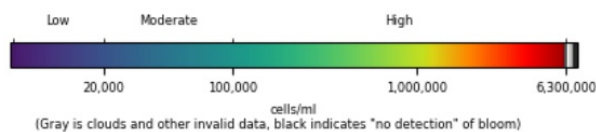


Composited Lake Okeechobee true color image derived from the OLCI sensor on Copernicus Sentinel-3a&b obtained from EUMETSAT.



Composited Cyanobacteria Index (Clycyno) for Lake Okeechobee. Algal bloom covers about 160 square miles, which is a decrease in area since Jul 01. Clouds may obscure the bloom, leading to an underestimate of the area. Moderate and low concentrations may not be obvious to the eye. Average wind for preceding 3 hours of satellite observation from South Florida Water Management District station LZ40.

Cyanobacteria Index for Lake Okeechobee for 2022-07-06 (Data Source: NOAA NCCOS)



Become a Citizen Scientist and Get the Algae Reporting App Today!

SCCF wants to know when and where all types of algae sightings occur to monitor conditions around the islands and to investigate algae bloom occurrence with patterns in seasonal weather changes and Lake Okeechobee water management practices.



Download the algae reporting app on your phone by [clicking here](#) or by searching for the ArcGIS Survey123 app in the app store. Once installed, give the app permission to access your phone's location to receive GPS coordinates of your sighting and camera/media to capture and attach pictures. When you open the app, click "Continue Without Signing In."

Next, download the algae reporting survey by scanning the QR code above or [clicking here](#) on your phone. Once the survey is downloaded, fill out the required fields and click the check mark in the lower right corner to submit your sighting. Note: If you do not have cellular coverage, you can still fill out the survey and save it in the outbox to be sent later. [Click here](#) to download instructions.

Resources To Follow:

To learn more about our current water conditions, click on the following links:

[Caloosahatchee Conditions Report](#)

A collaborative, weekly analysis, including recommendations for water managers regarding Lake Okeechobee flows.

[RECON](#)

SCCF's River, Estuary, and Coastal Observing Network is a network of eight optical water quality sensors deployed throughout the Caloosahatchee and the Pine Island Sound estuary to provide real-time water quality data.

[Red Tide Resources](#)

[NOAA HAB Monitoring System - Lake Okeechobee](#)

[Algae Reporting App.](#)

[Click here](#) to subscribe to *Connecting You to SCCF* and other SCCF mailing lists.

[DONATE TO SCCF](#)

Stay Connected!

