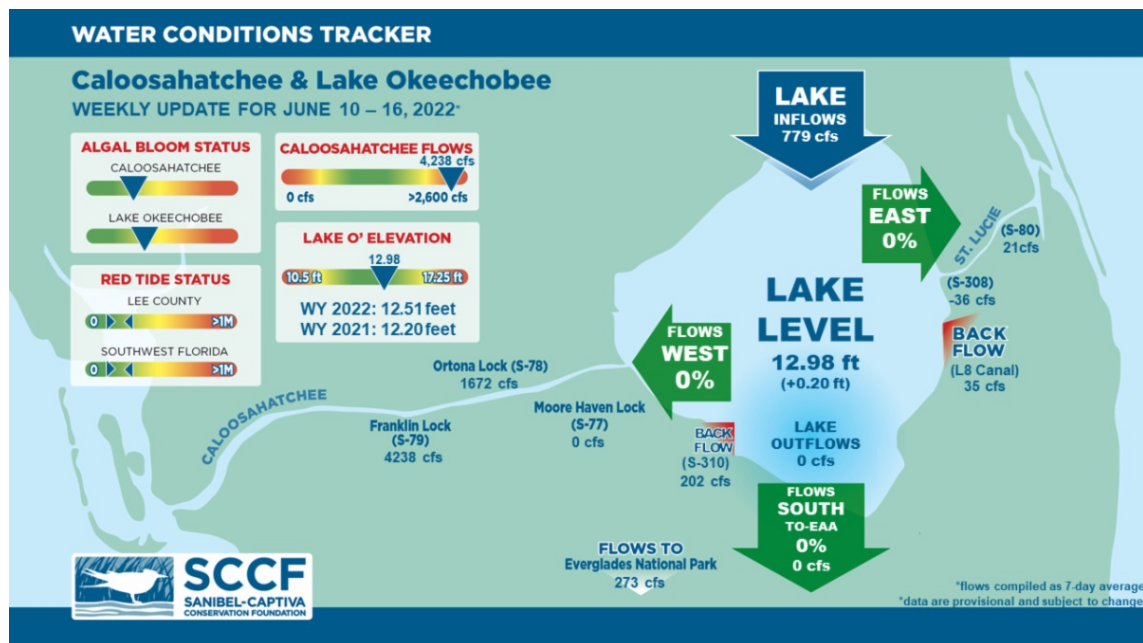




## This Week's Water Conditions Update

June 17, 2022

### Water Conditions Tracker



### Lake Okeechobee Levels & Caloosahatchee Flow Impacts

On 6/16/22 Lake Okeechobee was at 12.98 feet, increasing by 0.20 feet in the past week. The weekly average flow at S-79 was 4,238 cfs (cubic feet per second) and flow from the Lake at S-77 was an average of 0 cfs. The 14-day average flow on 6/9/22 was **3,787 cfs** and has been in the **damaging** (>2,600 cfs at S-79) flow envelope for 8 days.

For more information on Lake Okeechobee and estuary conditions go to the latest [Caloosahatchee Conditions Report](#)



## Virtual Water Quality Tour from Lighthouse Beach

[Click here](#) or on the image above to take a virtual tour from above Lighthouse Beach Park to see how the water looked this week.

Photo was taken on 6/13/22 at 2:49 PM on a falling tide (High tide @ 10:56 AM (3.43ft)).

---

## Red Tide

[Satellite imagery](#) over the past week has not detected any blooms off the coast of Southwest Florida.

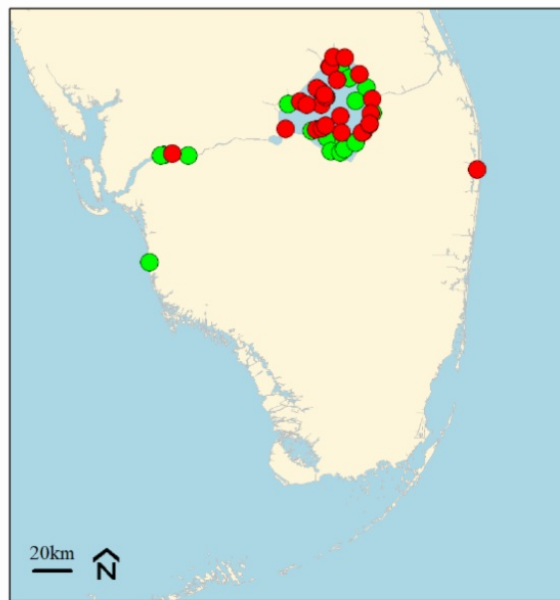
On 6/10/22, the FWC reported that the red tide organism, *Karenia brevis* was observed at very low concentrations offshore of Lee County, background concentrations in Collier County, and background concentrations offshore of Monroe County.

## Blue-Green Algae

On 6/13/22 sampling for cyanobacteria by the Lee County Environmental Lab reported the **presence** of cyanobacteria at the **Alva Boat Ramp** and **Davis Boat Ramp** as sparse specks. *Microcystis* and *Dolichospermum* were **moderately abundant** at **North Shore Park** with specks and accumulation onshore.

Over the past week, [satellite imagery](#) from Lake Okeechobee showed that algal blooms covered about 160 square miles of the Lake along the north, west, and southern shores.

Data from the [FDEP blue-green algae dashboard](#) reported 82 samples collected over the past 30 days for the 10 county area (map below). 36 samples had toxins present ranging from 0.25 to 2.6 µg per L which is below the EPA recommended standard for recreational waters (8 µg per L).



Blue-green Algae Toxin status  
 May 17,2022 to Jun 08,2022  
 (Presence/Absence)

- Toxin Present
- Toxin Not Present
- No Data

Blue-green Algae sampling results for the last 30-days for the 10 county area (Lee, Collier, Hendry, Glades, Okeechobee, Martin, Palm Beach, Broward, Miami-Dade and Monroe). Data from FDEP Blue-green algae dashboard

**Data are provisional and subject to change.**

Of the 82 samples collected, cyanobacteria was dominate in 31 samples, 36 samples had toxins present ranging from 0.25 to 2.6  $\mu\text{g L}^{-1}$  (does not include non-detects).

## Resources To Follow:

To learn more about our current water conditions, click on the following links:

### [Caloosahatchee Conditions Report](#)

A collaborative, weekly analysis, including recommendations for water managers regarding Lake Okeechobee flows.

### [RECON](#)

SCCF's River, Estuary, and Coastal Observing Network is a network of eight optical water quality sensors deployed throughout the Caloosahatchee and the Pine Island Sound estuary to provide real-time water quality data.

### [Red Tide Resources](#)

### [NOAA HAB Monitoring System - Lake Okeechobee](#)

### [Algae Reporting App.](#)

[Click here](#) to subscribe to *Connecting You to SCCF* and other SCCF mailing lists.

[DONATE TO SCCF](#)

Stay Connected!

