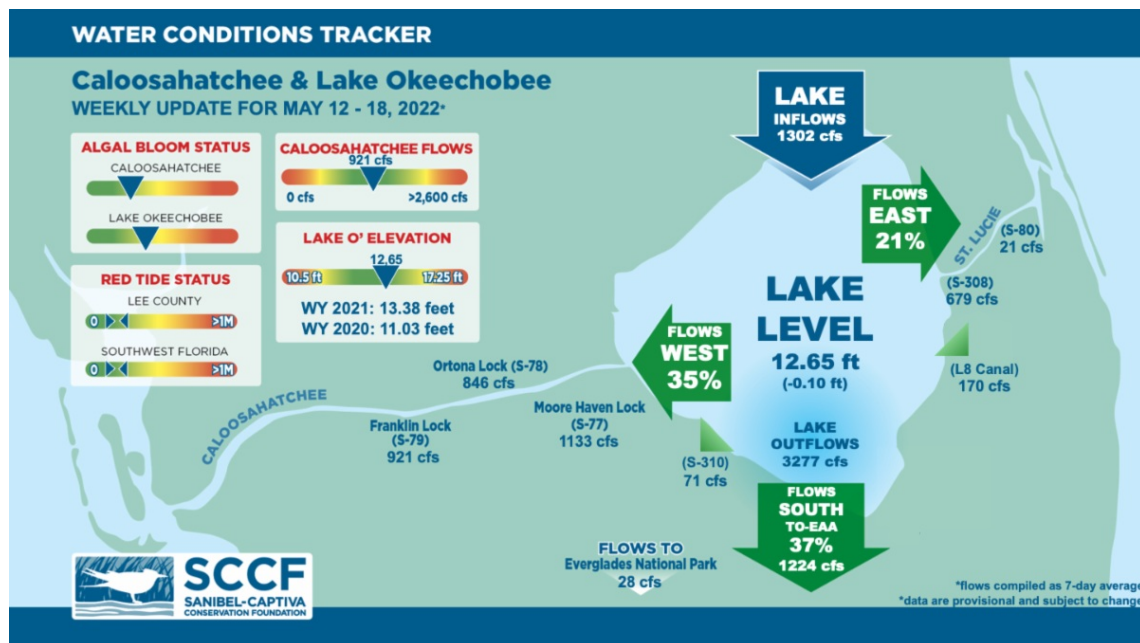




This Week's Water Conditions Update

May 20, 2022

Water Conditions Tracker



Lake Okeechobee Levels & Caloosahatchee Flow Impacts

On 5/18/22 Lake Okeechobee was at 12.65 feet, decreasing by 0.10 feet in the past week. The weekly average flow at S-79 was 921 cfs (cubic feet per second) and flow from the Lake at S-77 was an average of 1133 cfs. The 14-day average flow was **970 cfs** and has been in the **optimal flow envelope for 176 days**.

For more information on Lake Okeechobee and estuary conditions go to the latest [Caloosahatchee Conditions Report](#)



Virtual Water Quality Tour from Lighthouse Beach

[Click here](#) or on the image above to take a virtual tour from above Lighthouse Beach Park to see how the water looked this week.

Photo was taken on 5/16/22 at 1:23 PM on a falling tide (high tide @ 12:03 PM (3.34ft)).

Red Tide

[Satellite imagery](#) over the past week has not detected any blooms off the coast of Southwest Florida.

On 5/13/22, the FWC reported that the red tide organism, *Karenia brevis* was not observed in Southwest Florida.

The Clinic for the Rehabilitation of Wildlife (CROW) on Sanibel received 5 birds with toxicosis symptoms (from red tide or blue-green algae) from 5/8/22 - 5/16/22.

Blue-Green Algae

On 5/17/22 sampling for cyanobacteria by the Lee County Environmental Lab reported **abundant** *Dolichospermum*, sparse *Microcystis*, and cyanobacterial filaments at the **Alva Boat Ramp** as streaks with some accumulation. *Dolichospermum*, sparse *Microcystis*, and cyanobacterial filaments were **moderately abundant** at the **Franklin Locks** as some streaks with accumulation along the lock. *Dolichospermum*, *Microcystis* and cyanobacterial filaments were moderately **abundant** at the **Davis Boat Ramp** as streaks with accumulation along the seawall.

Over the past week, [satellite imagery](#) from Lake Okeechobee showed moderate to high bloom potential on 160 square miles of the Lake, primarily in on the northern shoreline and in Fisheating Bay.

Resources To Follow:

To learn more about our current water conditions, click on the following links:

[Caloosahatchee Conditions Report](#)

A collaborative, weekly analysis, including recommendations for water managers regarding Lake Okeechobee flows.

RECON

SCCF's River, Estuary, and Coastal Observing Network is a network of eight optical water quality sensors deployed throughout the Caloosahatchee and the Pine Island Sound estuary to provide real-time water quality data.

Red Tide Resources

[NOAA HAB Monitoring System - Lake Okeechobee](#)

[Algae Reporting App](#)

[Click here](#) to subscribe to ***Connecting You to SCCF*** and other SCCF mailing lists.

DONATE TO SCCF

Stay Connected!

