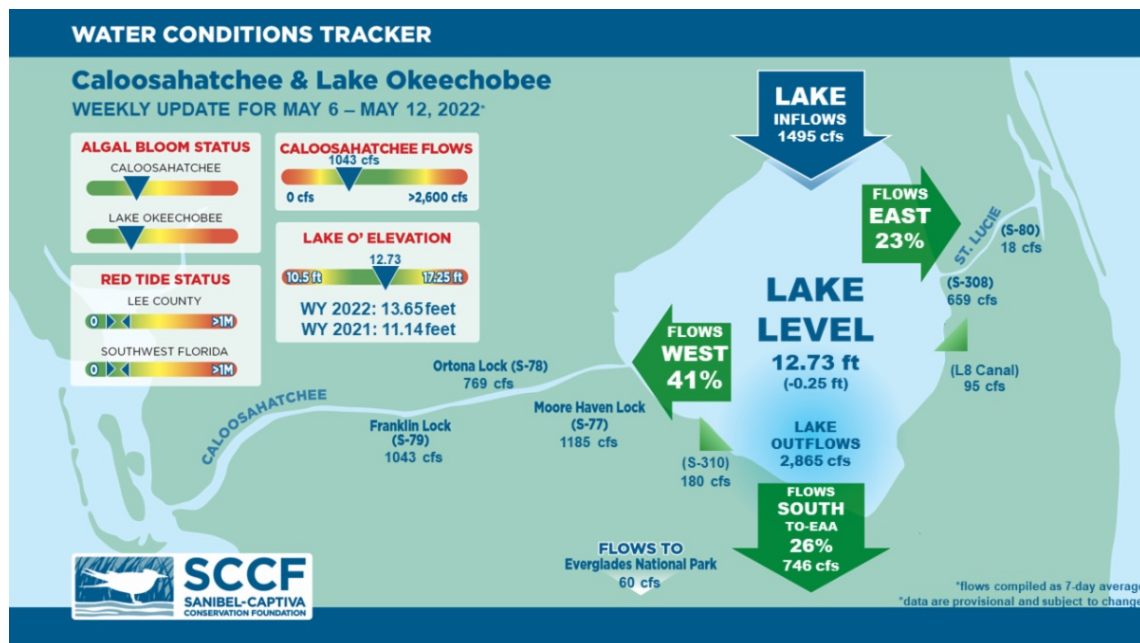




## This Week's Water Conditions Update

May 13, 2022

### Water Conditions Tracker



### Lake Okeechobee Levels & Caloosahatchee Flow Impacts

On 5/12/22 Lake Okeechobee was at 12.73 feet, decreasing by 0.25 feet in the past week. The weekly average flow at S-79 was 1,043 cfs (cubic feet per second) and flow from the Lake at S-77 was an average of 1185 cfs. The 14-day average flow was **1,026 cfs** and has been in the **optimal flow envelope for 170 days**.

For more information on Lake Okeechobee and estuary conditions go to the latest [Caloosahatchee Conditions Report](#)



## Virtual Water Quality Tour from Lighthouse Beach

[Click here](#) or on the image above to take a virtual tour from above Lighthouse Beach Park to see how the water looked this week.

Photo was taken on 5/9/22 at 1:49 PM on a low tide (low tide @ 2:07 PM (1.76ft)).

---

## Red Tide

[Satellite imagery](#) over the past week has not detected any blooms off the coast of Southwest Florida.

On 5/6/22, the FWC reported that the red tide organism, *Karenia brevis*, in one sample each from Southwest Florida, Northwest Florida, and Florida's East Coast over the past week. In **Southwest Florida** over the past week, *K. brevis* was observed at background concentrations offshore of Collier County.

The Clinic for the Rehabilitation of Wildlife (CROW) on Sanibel received 6 birds with toxicosis symptoms (from red tide or blue-green algae) from 4/26/22 - 5/2/22.



## Blue-Green Algae

On 5/9/22 sampling for cyanobacteria by the Lee County Environmental Lab reported **abundant** *Dolichospermum*, *Microcystis*, and cyanobacterial filaments at the **Alva Boat Ramp** as visible streaks with some accumulation. *Dolichospermum*, *Microcystis*, and cyanobacterial filaments were **moderately abundant** at the **Franklin Locks** as visible streaks with accumulation along the lock. *Dolichospermum* and cyanobacterial filaments were **present** at the **Davis Boat Ramp** as visible specks.

Over the past week, [satellite imagery](#) from Lake Okeechobee showed bloom potential on 20-25% of the Lake.

---

## Resources To Follow:

To learn more about our current water conditions, click on the following links:

### **Caloosahatchee Conditions Report**

A collaborative, weekly analysis, including recommendations for water managers regarding Lake Okeechobee flows.

### **RECON**

SCCF's River, Estuary, and Coastal Observing Network is a network of eight optical water quality sensors deployed throughout the Caloosahatchee and the Pine Island Sound estuary to provide real-time water quality data.

### **Red Tide Resources**

### **NOAA HAB Monitoring System - Lake Okeechobee**

### **Algae Reporting App.**

---

**[Click here](#)** to subscribe to ***Connecting You to SCCF*** and other SCCF mailing lists.

---

**DONATE TO SCCF**

**Stay Connected!**

