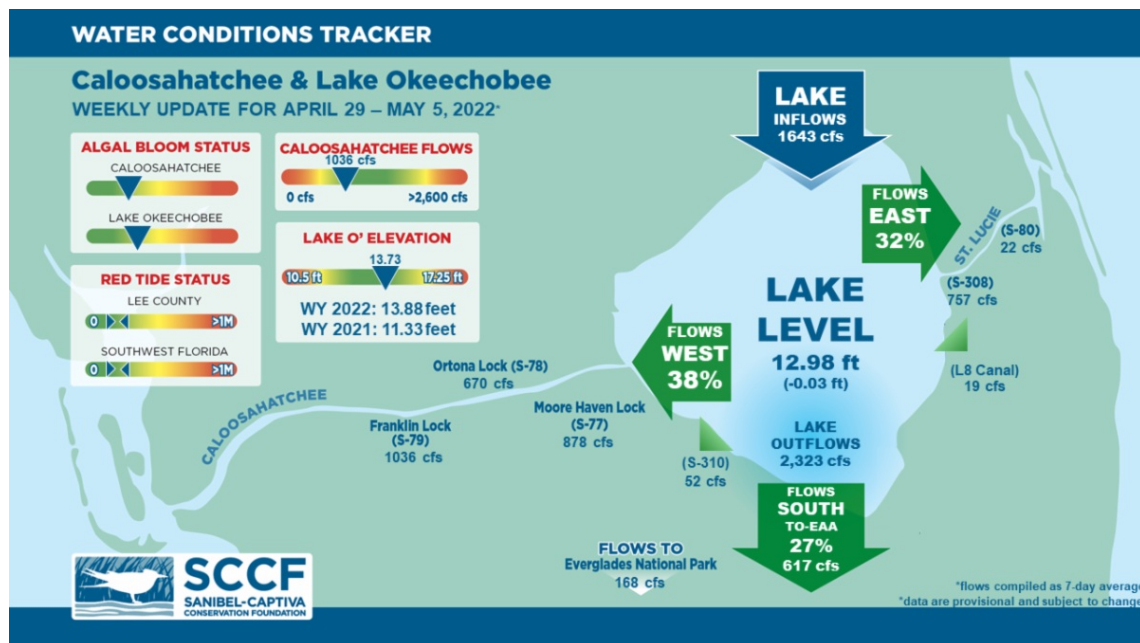




## This Week's Water Conditions Update

May 6, 2022

### Water Conditions Tracker



### Lake Okeechobee Levels & Caloosahatchee Flow Impacts

On 5/5/22 Lake Okeechobee was at 12.98 feet, decreasing by 0.03 feet in the past week. The weekly average flow at S-79 was 1,036 cfs (cubic feet per second) and flow from the Lake at S-77 was an average of 878 cfs. The 14-day average flow was **1,275 cfs** and has been in the **optimal flow envelope for 163 days**.

For more information on Lake Okeechobee and estuary conditions go to the latest [Caloosahatchee Conditions Report](#)



## Virtual Water Quality Tour from Lighthouse Beach

[Click here](#) or on the image above to take a virtual tour from above Lighthouse Beach Park to see how the water looked this week. **A family of dolphins and a manatee can be spotted on this weeks virtual tour image!**

Photo was taken on 5/2/22 at 1:22 PM on a high tide (high tide @ 12:49 PM (3.08ft)).

---

### Red Tide

[Satellite imagery](#) over the past week has not detected any blooms off the coast of Southwest Florida.

On 4/15/22, the FWC reported that the red tide organism, *Karenia brevis*, was not observed in samples collected statewide over the past week.

The Clinic for the Rehabilitation of Wildlife (CROW) on Sanibel received 2 birds with toxicosis symptoms (from red tide or blue-green algae) from 4/26/22 - 5/2/22.

### Blue-Green Algae

On 5/2/22 sampling for cyanobacteria by the Lee County Environmental Lab reported **moderately abundant** *Dolichospermum*, *Microcystis*, and cyanobacterial filaments at the **Alva Boat Ramp** as visible streaks and at the **Franklin Locks** as visible streaks with accumulation. *Dolichospermum*, *Microcystis*, and cyanobacterial filaments were present at the **Davis Boat Ramp** as visible streaks.

Over the past week, [satellite imagery](#) from Lake Okeechobee showed bloom potential on approximately 160 square miles of the Lake.

---

## Resources To Follow:

To learn more about our current water conditions, click on the following links:

### [Caloosahatchee Conditions Report](#)

A collaborative, weekly analysis, including recommendations for water managers regarding Lake Okeechobee flows.

### [RECON](#)

SCCF's River, Estuary, and Coastal Observing Network is a network of eight optical water

quality sensors deployed throughout the Caloosahatchee and the Pine Island Sound estuary to provide real-time water quality data.

[Red Tide Resources](#)

[NOAA HAB Monitoring System - Lake Okeechobee](#)

[Algae Reporting App.](#)

---

[Click here](#) to subscribe to *Connecting You to SCCF* and other SCCF mailing lists.

---

[DONATE TO SCCF](#)

**Stay Connected!**

