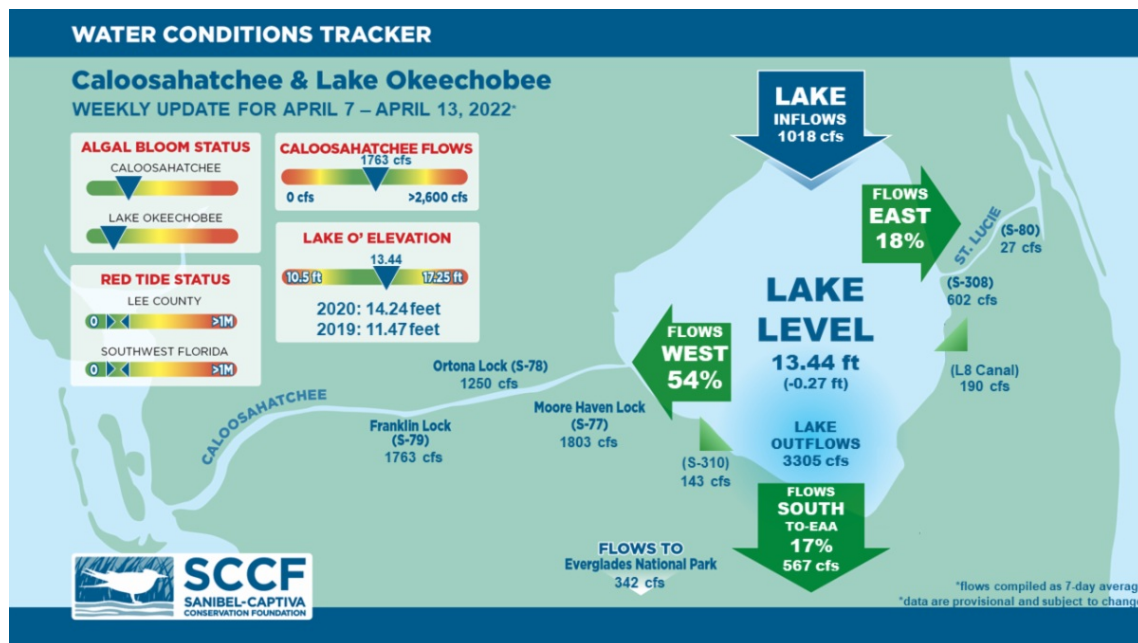




This Week's Water Conditions Update

April 15, 2022

Water Conditions Tracker



Lake Okeechobee Levels & Caloosahatchee Flow Impacts

On 4/13/22 Lake Okeechobee was at 13.44 feet, decreasing by 0.27 feet in the past week. The weekly average flow at S-79 was 1,763 cfs (cubic feet per second) and flow from the Lake at S-77 was an average of 1,803 cfs. The 14-day average flow was **1,812 cfs** and has been in the **optimal flow envelope for 141 days**.

For more information on Lake Okeechobee and estuary conditions go to the latest [Caloosahatchee Conditions Report](#)



Virtual Water Quality Tour from Lighthouse Beach

[Click here](#) or on the image above to take a virtual tour from above Lighthouse Beach Park to see how the water looked this week.

Photo was taken on 4/11/22 at 1:22 PM on a falling tide (high tide @ 11:40 AM (1.85 ft)).

Red Tide

[Satellite imagery](#) over the past week has not detected any blooms off the coast of Southwest Florida.

On 4/8/22, the FWC reported that the red tide organism, *Karenia brevis*, was observed at background concentrations in one Northwest Florida sample over the past week. In Southwest Florida, *K. brevis* was not observed.

The Clinic for the Rehabilitation of Wildlife (CROW) on Sanibel received 2 birds with toxicosis symptoms (from red tide or blue-green algae) from 4/5/22 - 4/11/22.

Blue-Green Algae

On 4/11/22 sampling for cyanobacteria by the Lee County Environmental Lab reported the **presence** of *Dolichospermum*, *Microcystis*, and cyano-filaments at the **Alva Boat Ramp** as visible specks and at the **Davis Boat Ramp** with slight accumulation along the seawall. *Dolichospermum*, *Microcystis*, and cyano-filaments were **moderately abundant** upstream of the **Franklin Locks** with streaks and accumulation along the locks.

Over the past week, [satellite imagery](#) from Lake Okeechobee showed moderate bloom potential of cyano in Fisheating Bay and along the Northern shoreline.

Resources To Follow:

To learn more about our current water conditions, click on the following links:

[Caloosahatchee Conditions Report](#)

A collaborative, weekly analysis, including recommendations for water managers regarding Lake Okeechobee flows.

[RECON](#)

SCCF's River, Estuary, and Coastal Observing Network is a network of eight optical water quality sensors deployed throughout the Caloosahatchee and the Pine Island Sound

estuary to provide real-time water quality data.

[Red Tide Resources](#)

[NOAA HAB Monitoring System - Lake Okeechobee](#)

[Algae Reporting App.](#)

[Click here](#) to subscribe to *Connecting You to SCCF* and other SCCF mailing lists.

[DONATE TO SCCF](#)

Stay Connected!

