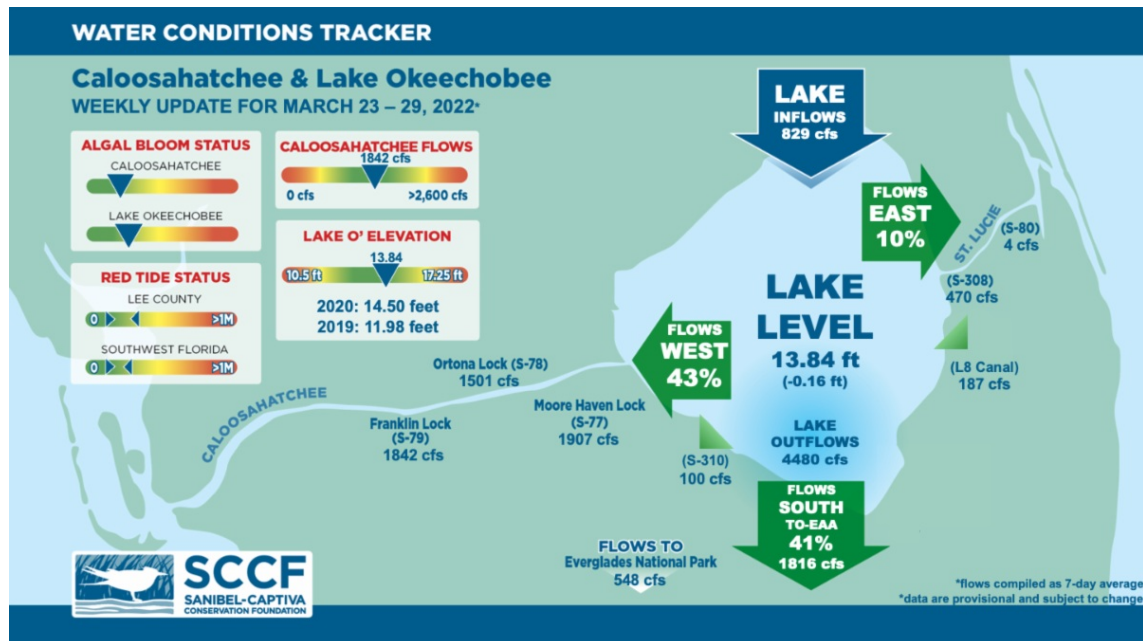




## This Week's Water Conditions Update

April 1, 2022

### Water Conditions Tracker



### Lake Okeechobee Levels & Caloosahatchee Flow Impacts

On 3/29/22 Lake Okeechobee was at 13.84 feet, decreasing by 0.16 feet in the past week. The weekly average flow at S-79 was 1,842 cfs (cubic feet per second) and flow from the Lake at S-77 was an average of 1,907 cfs. The 14-day average flow was **1,895 cfs** and has been in the **optimal flow envelope for 120 days**.

For more information on Lake Okeechobee and estuary conditions go to the latest [Caloosahatchee Conditions Report](#)



### Virtual Water Quality Tour from Lighthouse Beach

[Click here](#) or on the image above to take a virtual tour from above Lighthouse Beach Park to see how the water looked this week.

Photo was taken on 3/25/22 at 8:22 AM on a rising tide (high tide @ 2:26 PM (2.69 ft)).

---

### Red Tide

[Satellite imagery](#) over the past week has not detected any blooms off the coast of Southwest Florida.

On 3/11/22, the FWC reported that *K. brevis* was observed at background concentrations in one sample each from offshore of Collier and Monroe counties.

The Clinic for the Rehabilitation of Wildlife (CROW) on Sanibel received 7 birds with toxicosis symptoms (from red tide or blue-green algae) from 3/20/22 - 3/29/22.

### Blue-Green Algae

On 3/28/22 sampling for cyanobacteria by the Lee County Environmental Lab reported the **presence** of *Dolichospermum* and *Microcystis* at the **Alva Boat Ramp** as streaks with no accumulation. *Dolichospermum* and *Microcystis* were **moderately abundant** at the **Davis Boat Ramp** and upstream of the **Franklin Locks** with streaks and accumulation along the seawall.

Over the past week, [satellite imagery](#) from Lake Okeechobee showed algal blooms cover approximately 80 square miles of the lake, which is an increase since March 28, primarily on the northwestern shore.

---

### Resources To Follow:

To learn more about our current water conditions, click on the following links:

#### [Caloosahatchee Conditions Report](#)

A collaborative, weekly analysis, including recommendations for water managers regarding Lake Okeechobee flows.

#### [RECON](#)

SCCF's River, Estuary, and Coastal Observing Network is a network of eight optical water

quality sensors deployed throughout the Caloosahatchee and the Pine Island Sound estuary to provide real-time water quality data.

[Red Tide Resources](#)

[NOAA HAB Monitoring System - Lake Okeechobee](#)

[Algae Reporting App.](#)

---

[Click here](#) to subscribe to *Connecting You to SCCF* and other SCCF mailing lists.

---

[DONATE TO SCCF](#)

**Stay Connected!**

