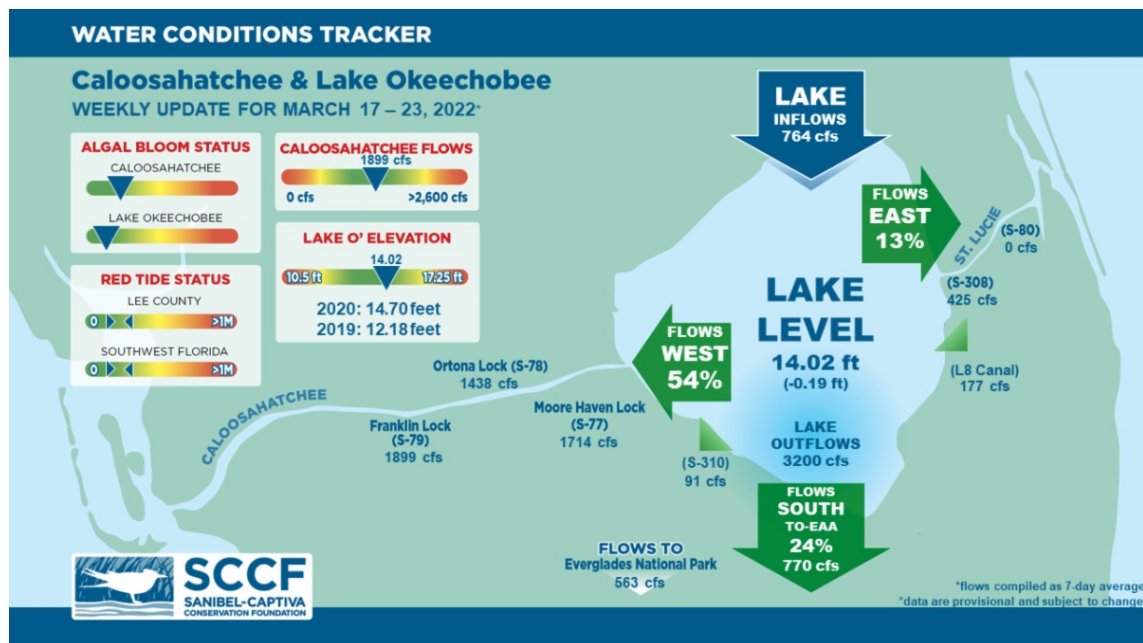




This Week's Water Conditions Update

March 25, 2022

Water Conditions Tracker



Lake Okeechobee Levels & Caloosahatchee Flow Impacts

On 3/23/22 Lake Okeechobee was at 14.02 feet, decreasing by 0.19 feet in the past week. The weekly average flow at S-79 was 1,899 cfs (cubic feet per second) and flow from the Lake at S-77 was an average of 1,714 cfs. The 14-day average flow was **1,920 cfs** and has been in the **optimal flow envelope for 120 days**.

For more information on Lake Okeechobee and estuary conditions go to the latest [Caloosahatchee Conditions Report](#)



Virtual Water Quality Tour from Lighthouse Beach

[Click here](#) or on the image above to take a virtual tour from above Lighthouse Beach Park to see how the water looked this week.

Photo was taken on 3/14/22 at 12:31 PM on a rising tide (high tide @ 2:26 PM (2.69 ft)).

Red Tide

[Satellite imagery](#) over the past week has not detected any blooms off the coast of Southwest Florida.

On 3/11/22, the FWC reported that *K. brevis* was not observed in samples collected statewide over the past week.

The Clinic for the Rehabilitation of Wildlife (CROW) on Sanibel received 3 birds with toxicosis symptoms (from red tide or blue-green algae) from 3/15/22 - 3/20/22.

Blue-Green Algae

On 3/21/22 sampling for cyanobacteria by the Lee County Environmental Lab reported the **presence** of *Dolichospermum* and *Microcystis* upstream of the **Franklin Locks** with some wind driven accumulation and streaks along the lock. *Dolichospermum* and *Microcystis* were moderately abundant at the **Davis Boat Ramp** with wind driven accumulation and streaks.

Over the past week, [satellite imagery](#) from Lake Okeechobee showed approximately 10% coverage of low to moderate cyanobacteria bloom potential along the north western shoreline of the lake.

Resources To Follow:

To learn more about our current water conditions, click on the following links:

[Caloosahatchee Conditions Report](#)

A collaborative, weekly analysis, including recommendations for water managers regarding Lake Okeechobee flows.

[RECON](#)

SCCF's River, Estuary, and Coastal Observing Network is a network of eight optical water quality sensors deployed throughout the Caloosahatchee and the Pine Island Sound

estuary to provide real-time water quality data.

[Red Tide Resources](#)

[NOAA HAB Monitoring System - Lake Okeechobee](#)

[Algae Reporting App.](#)

[Click here](#) to subscribe to *Connecting You to SCCF* and other SCCF mailing lists.

[DONATE TO SCCF](#)

Stay Connected!

