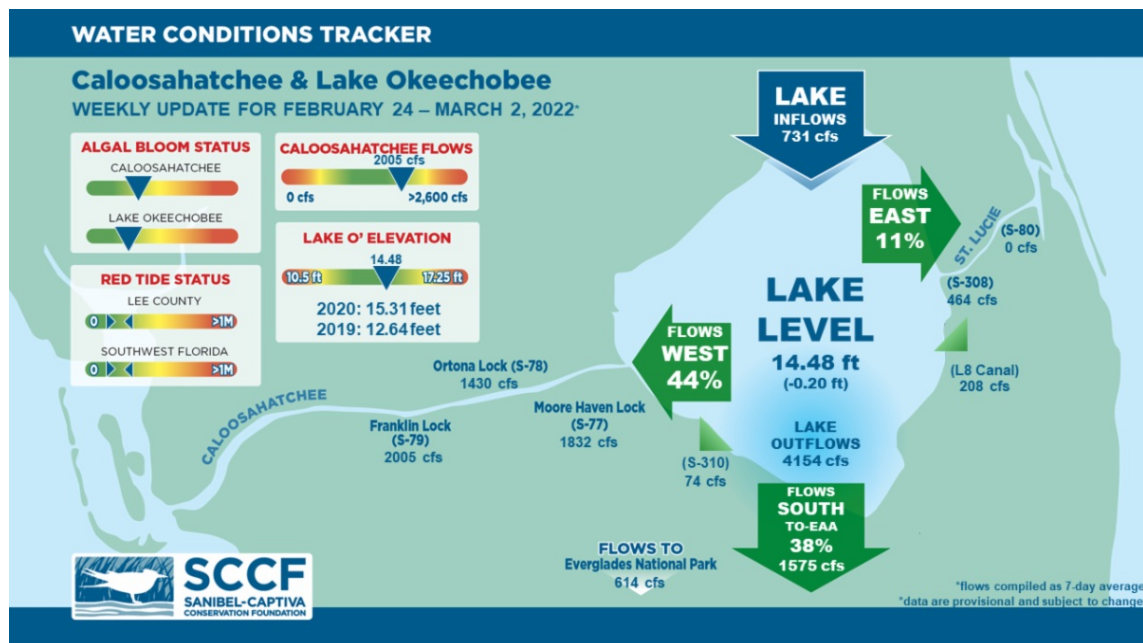




## This Week's Water Conditions Update

March 4, 2022

### Water Conditions Tracker



### Lake Okeechobee Levels & Caloosahatchee Flow Impacts

On 3/2/22 Lake Okeechobee was at 14.48 feet, decreasing by 0.20 feet in the past week. The weekly average flow at S-79 was 2,005 cfs (cubic feet per second) and flow from the Lake at S-77 was an average of 1,832 cfs. The 14-day average flow was **1,988 cfs** and has been in the **optimal flow envelope for 99** days.

For more information on Lake Okeechobee and estuary conditions go to the latest [Caloosahatchee Conditions Report](#)



## Virtual Water Quality Tour from Lighthouse Beach

[Click here](#) or on the image above to take a virtual tour from above Lighthouse Beach Park to see how the water looked this week.

Photo was taken on 3/1/22 at 2:23 PM on a falling tide (high tide @ 12:53 PM (1.53 ft)).

---

### Red Tide

[Satellite imagery](#) over the past week has not detected any blooms off the coast of Southwest Florida.

On 2/25/22, the FWC reported that *K. brevis* was not observed in samples collected statewide over the past week.

The Clinic for the Rehabilitation of Wildlife (CROW) on Sanibel received 1 bird with toxicosis symptoms (from red tide or blue-green algae) from 2/22/22 - 2/28/22.

### Blue-Green Algae

On 2/28/22 sampling for cyanobacteria by the Lee County Environmental Lab reported moderately abundant *Dolichospermum* at the Alva Boat Ramp as visible specks.

*Dolichospermum* was present upstream of the Franklin Locks as visible specks with some accumulation along the lock. *Microcystis* and *Dolichospermum* were present at the Davis Boat Ramp as visible specks with some streaks.

Over the past week, [satellite imagery](#) from Lake Okeechobee showed moderate to high cyanobacteria bloom potential along the western shore of the lake with decreasing coverage in area since last week.

---

## Resources To Follow:

To learn more about our current water conditions, click on the following links:

### [Caloosahatchee Conditions Report](#)

A collaborative, weekly analysis, including recommendations for water managers regarding Lake Okeechobee flows.

### [RECON](#)

SCCF's River, Estuary, and Coastal Observing Network is a network of eight optical water quality sensors deployed throughout the Caloosahatchee and the Pine Island Sound

estuary to provide real-time water quality data.

[Red Tide Resources](#)

[NOAA HAB Monitoring System - Lake Okeechobee](#)

[Algae Reporting App.](#)

---

[Click here](#) to subscribe to *Connecting You to SCCF* and other SCCF mailing lists.

---

[DONATE TO SCCF](#)

**Stay Connected!**

