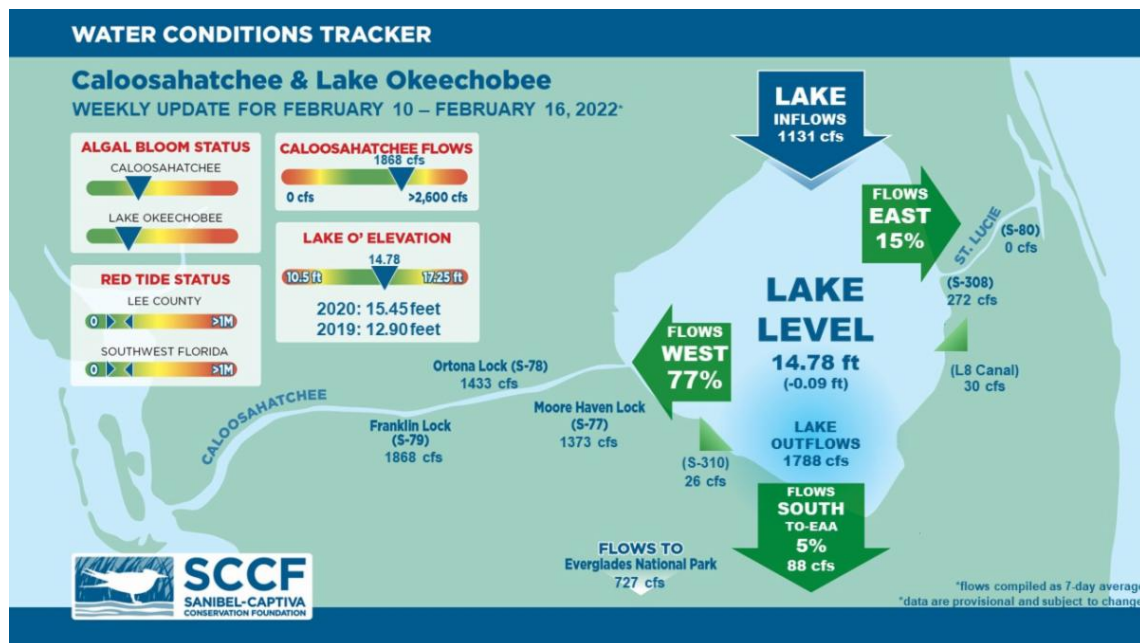




This Week's Water Conditions Update

February 17, 2022

Water Conditions Tracker



Lake Okeechobee Levels & Caloosahatchee Flow Impacts

On 2/16/22 Lake Okeechobee was at 14.78 feet, decreasing by 0.09 feet in the past week. The weekly average flow at S-79 was 1,868 cfs (cubic feet per second) and flow from the Lake at S-77 was an average of 1,373 cfs. The 14-day average flow on 2/16/22 was **1,889 cfs** and has been in the **optimal flow envelope for 83 days**.

For more information on Lake Okeechobee and estuary conditions go to the latest [Caloosahatchee Conditions Report](#)



Virtual Water Quality Tour from Lighthouse Beach

[Click here](#) or on the image above to take a virtual tour from above Lighthouse Beach Park to see how the water looked this week.

Photo was taken on 2/14/22 at 2:01 PM on a high tide (high tide @ 1:10 PM (1.44 ft)).

Red Tide

[Satellite imagery](#) over the past week has not detected any blooms off the coast of Southwest Florida.

On 1/28/22, the FWC reported that *K. brevis* was not observed in samples collected statewide over the past week.

The Clinic for the Rehabilitation of Wildlife (CROW) on Sanibel received 5 birds with toxicosis symptoms (from red tide or blue-green algae) from 2/8/22 - 2/14/22.

Blue-Green Algae

On 2/14/22 sampling for cyanobacteria by the Lee County Environmental Lab reported the **presence** of *Dolichospermum* at the **Alva Boat Ramp** as few visible specks. *Microcystis* and *Dolichospermum* were **present** upstream of the **Franklin Locks** as visible specks with some wind-driven accumulation. *Microcystis* and *Dolichospermum* were **present** at the **Davis Boat Ramp** as visible specks with some wind-driven accumulation.

Over the past week, [satellite imagery](#) from Lake Okeechobee showed moderate cyanobacteria bloom potential along the western shore of the lake with approximately 60 square miles of coverage.

Resources To Follow:

To learn more about our current water conditions, click on the following links:

[Caloosahatchee Conditions Report](#)

A collaborative, weekly analysis, including recommendations for water managers regarding Lake Okeechobee flows.

[RECON](#)

SCCF's River, Estuary, and Coastal Observing Network is a network of eight optical water quality sensors deployed throughout the Caloosahatchee and the Pine Island Sound

estuary to provide real-time water quality data.

[Red Tide Resources](#)

[NOAA HAB Monitoring System - Lake Okeechobee](#)

[Algae Reporting App.](#)

[Click here](#) to subscribe to *Connecting You to SCCF* and other SCCF mailing lists.

[DONATE TO SCCF](#)

Stay Connected!

