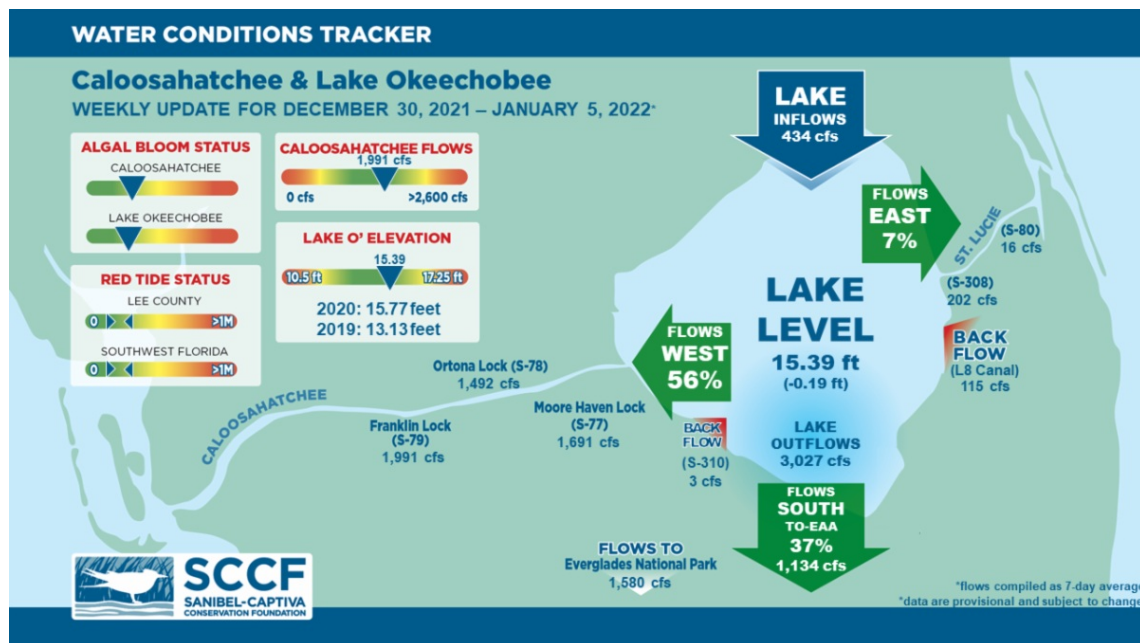




## This Week's Water Conditions Update

January 7, 2022

### Water Conditions Tracker



### Lake Okeechobee Levels & Caloosahatchee Flow Impacts

On 1/5/22 Lake Okeechobee was at 15.39 feet, decreasing by 0.19 feet in the past week. The weekly average flow at S-79 was 1,991 cfs (cubic feet per second) and flow from the Lake at S-77 was an average of 1,691 cfs. The 14-day average flow on 1/14/22 was **1,964 cfs** and has been in the **optimal** flow envelope (750 - 2,100 cfs) for **42** days.

For more information on Lake Okeechobee and estuary conditions go to the latest [Caloosahatchee Conditions Report](#)



## Virtual Water Quality Tour from Lighthouse Beach

[Click here](#) or on the image above to take a virtual tour from above Lighthouse Beach Park to see how the water looked this week.

Photo was taken on 1/4/22 at 11:18 AM on a rising tide (low tide @ 8:40 AM (-1.18ft)).

---

---

### Red Tide

[Satellite imagery](#) over the past week has shown no to low concentrations of chlorophyll off the coast of Southwest Florida. *Karenia brevis* and/or other algal species may be contributing to the chlorophyll concentrations.

On 12/29/21, the FWC reported that *K. brevis* was detected in one sample at very low concentrations offshore of Charlotte County.

The Clinic for the Rehabilitation of Wildlife (CROW) on Sanibel received 26 birds with toxicosis symptoms (from red tide or blue-green algae) from 12/21/21 - 1/3/22.

### Blue-Green Algae

On 1/3/22 sampling for cyanobacteria by the Lee County Environmental Lab reported the presence of *Microcystis* at the Alva Boat Ramp and upstream of the Franklin Locks as visible sparse specks. On 12/27/22 they reported the presence of *Microcystis* at the Alva Boat Ramp and the Davis Boat Ramp as visible sparse specks.

Over the past week, [satellite imagery](#) from Lake Okeechobee showed cyanobacteria primarily along the western shore of the lake.

---

## Resources To Follow:

To learn more about our current water conditions, click on the following links:

### [Caloosahatchee Conditions Report](#)

A collaborative, weekly analysis, including recommendations for water managers regarding Lake Okeechobee flows.

### [RECON](#)

SCCF's River, Estuary, and Coastal Observing Network is a network of eight optical water

quality sensors deployed throughout the Caloosahatchee and the Pine Island Sound estuary to provide real-time water quality data.

[Red Tide Resources](#)

[NOAA HAB Monitoring System - Lake Okeechobee](#)

[Algae Reporting App.](#)

---

[Click here](#) to subscribe to *Connecting You to SCCF* and other SCCF mailing lists.

---

[DONATE TO SCCF](#)

Stay Connected!

