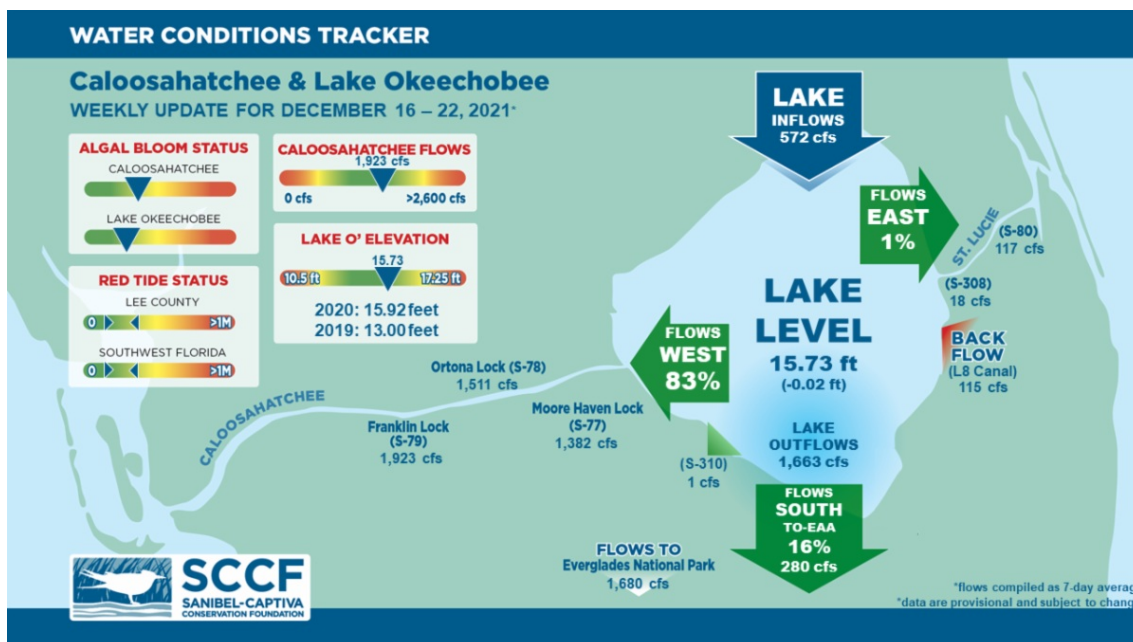




This Week's Water Conditions Update

December 24, 2021

Water Conditions Tracker



Lake Okeechobee Levels & Caloosahatchee Flow Impacts

On 12/15/21 Lake Okeechobee was at 15.73 feet, decreasing by 0.02 feet in the past week. The weekly average flow at S-79 was 1,923 cfs (cubic feet per second) and flow from the Lake at S-77 was an average of 1,382 cfs. The 14-day average flow on 12/15/21 was **1,923 cfs** and has been in the **optimal** flow envelope (750 - 2,100 cfs) for **28** days.

For more information on Lake Okeechobee and estuary conditions go to the latest [Caloosahatchee Conditions Report](#)



Virtual Water Quality Tour from Lighthouse Beach

[Click here](#) or on the image above to take a virtual tour from above Lighthouse Beach Park to see how the water looked this week.

Photo was taken on 12/23/21 at 10:50 AM on a rising tide (low tide @ 9:54 AM (-0.54ft)).

Red Tide

[Satellite imagery](#) over the past week has shown no to low concentrations of chlorophyll off the coast of Southwest Florida. *Karenia brevis* and/or other algal species may be contributing to the chlorophyll concentrations.

On 12/22/21, the FWC reported that *K. brevis* was detected in six samples along Florida's Gulf Coast. In Southwest Florida over the past week, *K. brevis* was observed at background to very low concentrations in and offshore of Lee County.

The Clinic for the Rehabilitation of Wildlife (CROW) on Sanibel received 27 birds with toxicosis symptoms (from red tide or blue-green algae) from 12/14/21 - 12/19/21.

Blue-Green Algae

On 12/20/21 sampling for cyanobacteria by the Lee County Environmental Lab reported the presence of *Microcystis* and *Dolichospermum* upstream of the Franklin Locks as some streaks with light wind-driven accumulation along the locks and shore. *Microcystis*, *Dolichospermum*, and *Planktothrix* were moderately abundant at the Davis Boat Ramp as streaks with accumulation along the seawall. Over the past week, [satellite imagery](#) from Lake Okeechobee showed algal blooms covering approximately 40 square miles, an increase since last week, primarily in the western portion of the lake.

Merry Christmas and Happy New Year from the SCCF family to yours. We'll return with the conditions update in 2022. Enjoy the holidays!

Resources To Follow:

To learn more about our current water conditions, click on the following links:

[Caloosahatchee Conditions Report](#)

A collaborative, weekly analysis, including recommendations for water managers regarding Lake Okeechobee flows.

RECON

SCCF's River, Estuary, and Coastal Observing Network is a network of eight optical water quality sensors deployed throughout the Caloosahatchee and the Pine Island Sound estuary to provide real-time water quality data.

Red Tide Resources

NOAA HAB Monitoring System - Lake Okeechobee

Algae Reporting App.

[Click here](#) to subscribe to ***Connecting You to SCCF*** and other SCCF mailing lists.

DONATE TO SCCF

Stay Connected!

