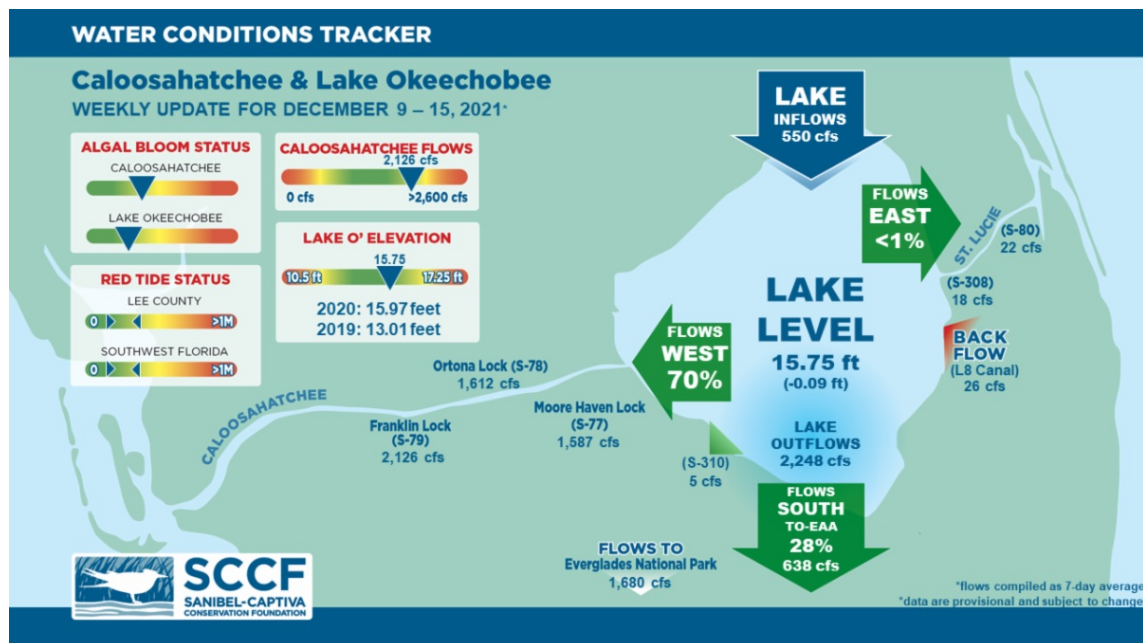




## This Week's Water Conditions Update

December 17, 2021

### Water Conditions Tracker



### Lake Okeechobee Levels & Caloosahatchee Flow Impacts

On 12/15/21 Lake Okeechobee was at 15.75 feet, decreasing by 0.09 feet in the past week. The weekly average flow at S-79 was 2,126 cfs (cubic feet per second) and flow from the Lake at S-77 was an average of 1,587 cfs. The 14-day average flow on 12/15/21 was **2,013 cfs** and has been in the **optimal** flow envelope (750 - 2,100 cfs) for **21** days.

For more information on Lake Okeechobee and estuary conditions go to the latest [Caloosahatchee Conditions Report](#)



## Virtual Water Quality Tour from Lighthouse Beach

[Click here](#) or on the image above to take a virtual tour from above Lighthouse Beach Park to see how the water looked this week.

Photo was taken on 12/14/21 at 11:07 AM on a falling tide (high tide @ 10:09 AM (1.57ft)).

---

---

### Red Tide

[Satellite imagery](#) over the past week has shown low concentrations of chlorophyll off the coast of Southwest Florida. *Karenia brevis* and/or other algal species may be contributing to the chlorophyll concentrations.

On 12/10/21, the FWC reported that *K. brevis* was detected in six samples along Florida's Gulf Coast. In Southwest Florida over the past week, *K. brevis* was observed at background concentrations offshore of Pinellas County, and background and very low concentrations offshore of Lee County.

The Clinic for the Rehabilitation of Wildlife (CROW) on Sanibel received 12 birds with toxicosis symptoms (from red tide or blue-green algae) from 12/6/21 - 11/13/21.

### Blue-Green Algae

On 12/14/21 sampling for cyanobacteria by the Lee County Environmental Lab reported the presence of *Microcystis* at the Alva Boat Ramp (20 colonies/L). *Microcystis* and *Aphanocapsa* were present upstream of the Franklin Locks (230 colonies/L) as light streaks with light wind-driven accumulation along the locks and shore. *Microcystis* and *Dolichospermum* were moderately abundant at the Davis Boat Ramp (1150 colonies/L) as streaks with accumulation along the seawall. Over the past week, [satellite imagery](#) Lake Okeechobee showed algal blooms covering approximately 20 square miles, primarily in the southern portion of the lake.

---

## Wildlife Reports

SCCF staff reported dead coquinas and other sea life on Sanibel and Captiva Beaches - except in the area between Tradewinds and Bowman's where the red knots were still hanging around and finding live prey. On Captiva, there were numerous dead coquina- but the shorebirds were finding some live mole crabs to eat which is a good thing- especially after a renourishment project.

There was one sea turtle stranding reported: one dead green sea turtle on Sanibel.

---

## Resources To Follow:

To learn more about our current water conditions, click on the following links:

### **[Caloosahatchee Conditions Report](#)**

A collaborative, weekly analysis, including recommendations for water managers regarding Lake Okeechobee flows.

### **[RECON](#)**

SCCF's River, Estuary, and Coastal Observing Network is a network of eight optical water quality sensors deployed throughout the Caloosahatchee and the Pine Island Sound estuary to provide real-time water quality data.

### **[Red Tide Resources](#)**

### **[NOAA HAB Monitoring System - Lake Okeechobee](#)**

### **[Algae Reporting App.](#)**

---

**[Click here](#)** to subscribe to ***Connecting You to SCCF*** and other SCCF mailing lists.

---

**DONATE TO SCCF**

**Stay Connected!**

