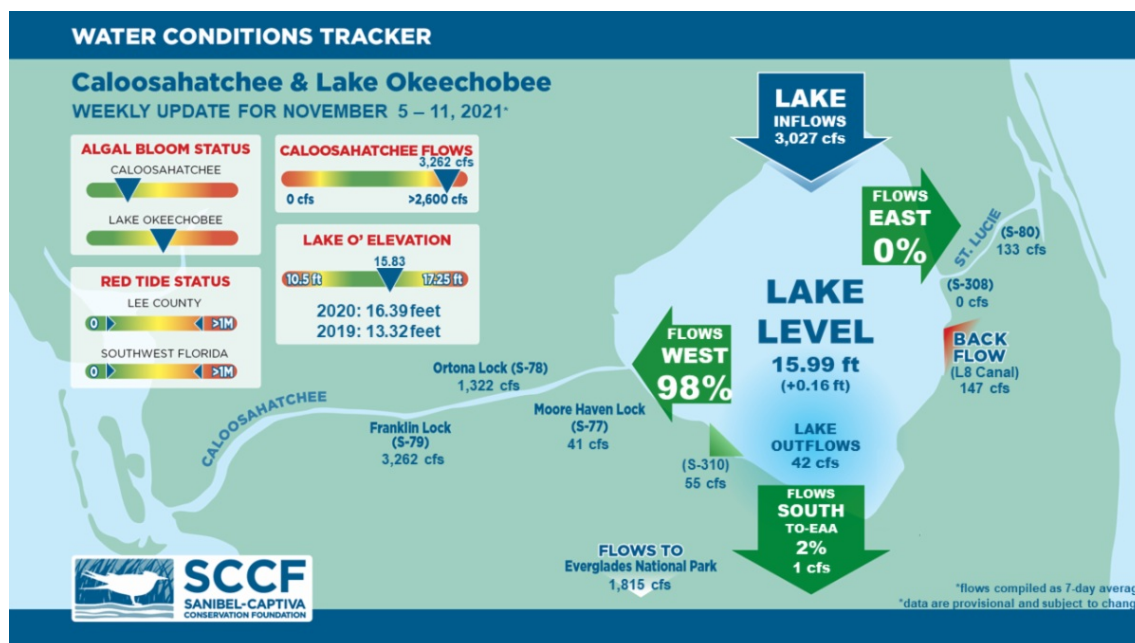




This Week's Water Conditions Update

November 12, 2021

Water Conditions Tracker



Lake Okeechobee Levels & Caloosahatchee Flow Impacts

On 11/11/21 Lake Okeechobee was at 15.99 feet increasing by 0.16 feet in the past week due to a rainfall event across the region last Thursday and Friday. The weekly average flow at S-79 was 3,262 cfs (cubic feet per second) this week and flow from the Lake at S-77 was an average of 41 cfs, so the majority of the flow to the estuary came from runoff in the watershed. The 14-day average flow on 11/11/21 was **2,372 cfs** and has been in the **stress** flow envelope (2,100 - 2,600 cfs) for **4 days**.

For more information on Lake Okeechobee and estuary conditions go to the latest [Caloosahatchee Conditions Report](#)

Weather Update

Light to moderate showers and thunderstorms are predicted through Saturday due to a cold front moving through the region from central Florida on Friday night. Drier conditions are expected to move in behind the cold front for Saturday night and Sunday.



Virtual Water Quality Tour from Lighthouse Beach

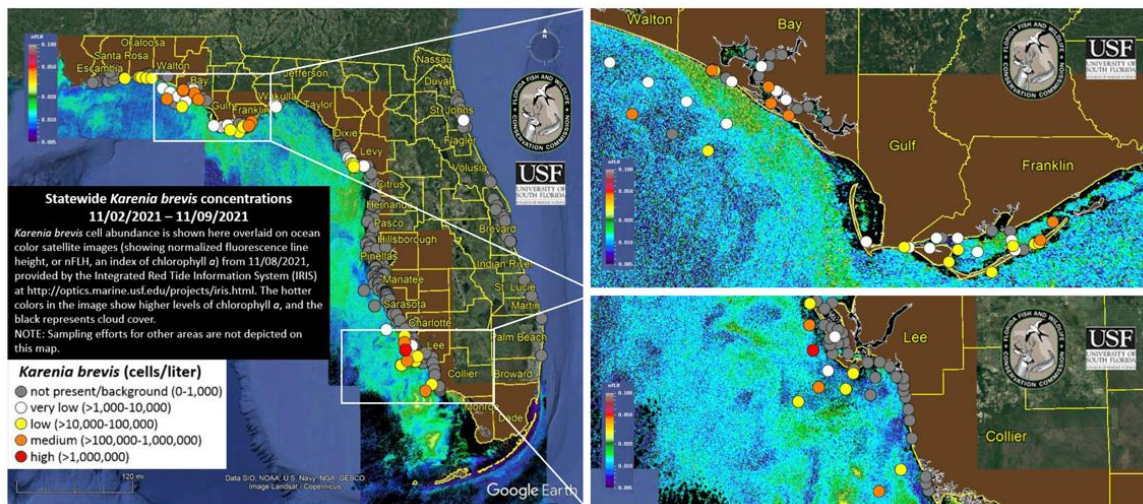
[Click here](#) or on the image above to take a virtual tour from above Lighthouse Beach Park to see how the water looked this week.

Photo was taken on 11/8/21 at 1:30 PM on a rising tide (low tide @ 9:46 AM (-0.48ft)).

Red Tide

[Satellite imagery](#) over the past week has shown low to moderate concentrations of chlorophyll off the coast of Southwest Florida. *Karenia brevis* and/or other algal species may be contributing to the chlorophyll concentrations. Low and medium concentrations of *Karenia brevis* were detected 1.1 miles south of Tarpon Bay Road Beach and 9.5 miles southwest of Bowman's Beach, respectively.

FWC samples in Lee county had background to high concentrations of *Karenia brevis*. The Clinic for the Rehabilitation of Wildlife (CROW) on Sanibel received 17 birds with toxicosis symptoms (from red tide or blue-green algae) from 10/31/21 - 11/8/21.



The [FWC fish kill hotline](#) received no reports of fish kills in Southwest Florida due to red tide over the past week, but they are still receiving reports in the panhandle (Franklin

County (2 reports)) related to red tide.

Blue-Green Algae

No cyanobacteria was present in the Caloosahatchee over the past week. On 11/8/21 [satellite imagery](#) showed low to medium bloom potential along the northwest and southwest shorelines in Lake Okeechobee.

Resources To Follow:

To learn more about our current water conditions, click on the following links:

[Caloosahatchee Conditions Report](#)

A collaborative, weekly analysis, including recommendations for water managers regarding Lake Okeechobee flows.

[RECON](#)

SCCF's River, Estuary, and Coastal Observing Network is a network of eight optical water quality sensors deployed throughout the Caloosahatchee and the Pine Island Sound estuary to provide real-time water quality data.

[Red Tide Resources](#)

[NOAA HAB Monitoring System - Lake Okeechobee](#)

[Algae Reporting App.](#)

[Click here](#) to subscribe to *Connecting You to SCCF* and other SCCF mailing lists.

[DONATE TO SCCF](#)

Stay Connected!

