

SECTION: 34
 TOWNSHIP: 45
 RANGE: 23

Eden Oak Preserve

0 150 300
 SCALE FEET

DCI 2016-00026
 FEB 19 2018

COMMUNITY DEVELOPMENT
 RECEIVED
 FEB 19 2018

Figure 10b. Future Land Use Map Amendment Area
 Proposed Conditions and Preservation Map

FLUCCS	Description	Acres
400	Upland	0.05 ac.
511/612	Canal/Mangrove Swamps	1.20 ac.
612	Mangrove Swamps	1.03 ac.
	Total	2.28 ac.

- Property Line
- Future Land Use Map Amendment Area
- Wetland Preserve (1.03 ac.)
- Upland Preserve (0.05 ac.)
- Open Water Preserve (1.20 ac.)

Notes:
 1. Property boundary, FLUMAA boundary, and site plan obtained from Q. Grady Minor and Associates, Inc.
 2. Approximate location of mosquito ditches and associated spoil piles based on photointerpretation of 1972 and 2008 aerial photography and extensive ground truthing in 2009.
 3. Delineation of jurisdictional wetlands reviewed and approved by SFWMD during a May 17, 2011 site inspection.
 4. Surveyed wetland line and top of bank line obtained from Q. Grady Minor and Associates, P.A.

PERMIT USE ONLY,
 NOT FOR CONSTRUCTION
 May 16, 2016 4:07:04 p.m.
 Drawing: EDENOAKMITNONFLUMAA.DWG

W. DEXTER BENDER
 & ASSOCIATES, INC.
 ENVIRONMENTAL & MARINE CONSULTING
 FORT MYERS 239-334-3680



- Retaining Wall with Rip-Rap
- Rip-Rap
- Docks

COMMUNITY DEVELOPMENT
 RECEIVED
 FEB 19 2018

DCI 2016-00026

0 100 200
 SCALE FEET

Notes:
 1. Property boundary and site plan obtained from Q. Grady Minor and Associates, P.A.

PERMIT USE ONLY, NOT FOR CONSTRUCTION

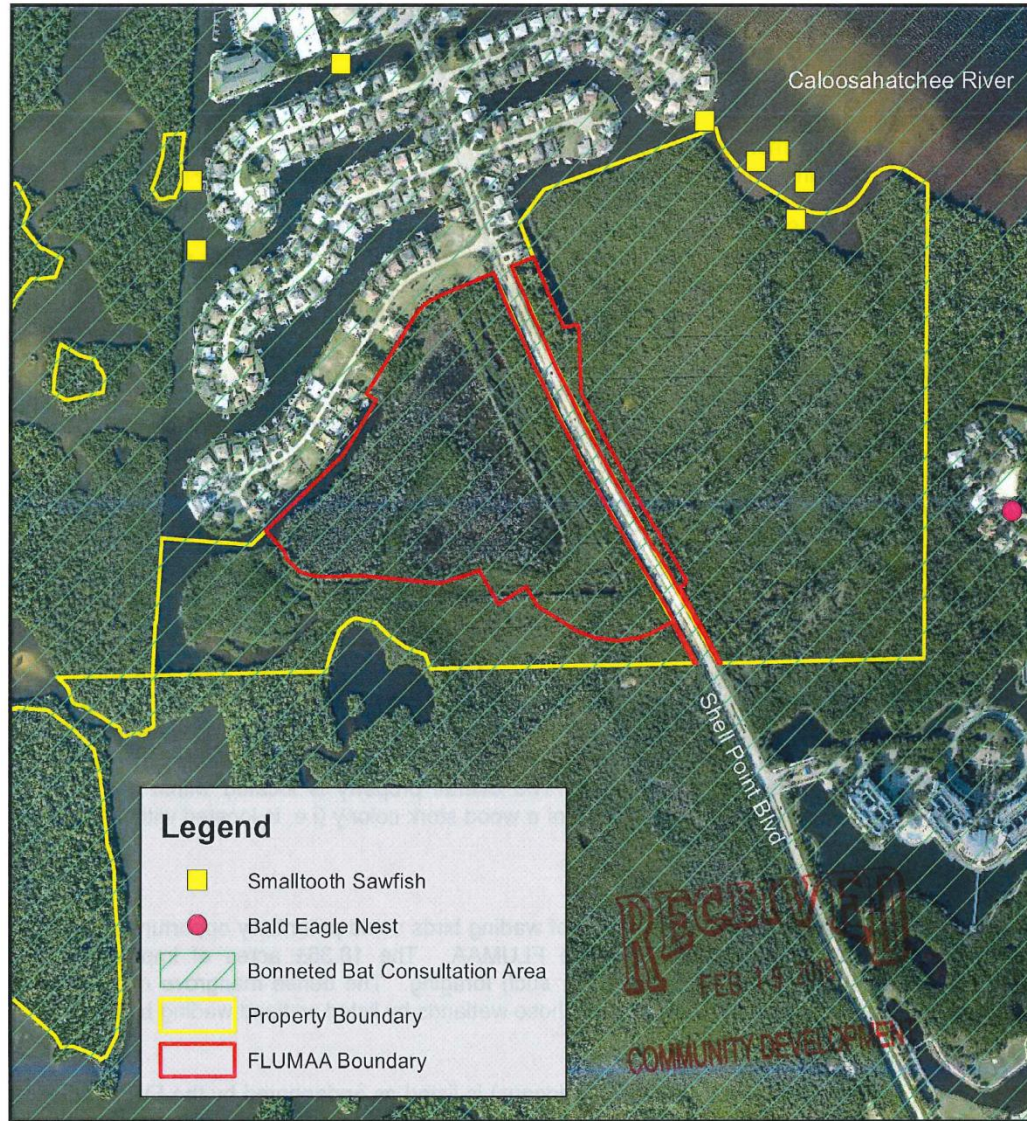
January 23, 2018 8:36:40 a.m.
 Drawing: EDENOAK-MCPDOCK-WALL.DWG

MCP Dock, Retaining Wall, and Rip-Rap Locations

EDEN OAK PRESERVE

DEXBENDER
 ENVIRONMENTAL CONSULTING
 FORT MYERS 239-334-3680

Eden Oak Preserve



0 0.1 0.2 0.4 Miles

Map based on data obtained from the Florida Fish and Wildlife Conservation Commission.

Figure 8b. Small Scale Protected Species Database Map



W. DEXTER BENDER & ASSOCIATES, INC.
ENVIRONMENTAL & MARINE CONSULTING
FORT MYERS (239) 334-3680